



Price
£350,000

Freehold

3x  1x  2x 

**Kirby Road, North End,
Portsmouth, Hampshire,
PO2**

OVER 60?

Secure this property
for up to **59% less!**

cubitt&west
Helping you move forwards



Main features

- Spacious mid terrace home
- Lounge through to dining area
- Separate utility area with shower and toilet
- Low maintenance rear garden and separate garage
- Being offered with no onward chain

Accommodation

GROUND FLOOR

Entrance Hallway

Lounge: 16'9 x 12'1 (5.11m x 3.69m)

Dining Area: 13'2 x 10'7 (4.02m x 3.23m)

Kitchen: 10'2 x 7'4 (3.10m x 2.24m)

Utility Area/Shower & Toilet

FIRST FLOOR

Landing

Bedroom 1: 17'4 x 12'1 (5.29m x 3.69m)

Bedroom 2: 13'2 x 10'7 (4.02m x 3.23m)

Bedroom 3: 10'0 x 7'4 (3.05m x 2.24m)

Bathroom: 8'10 x 5'11 (2.69m x 1.80m)

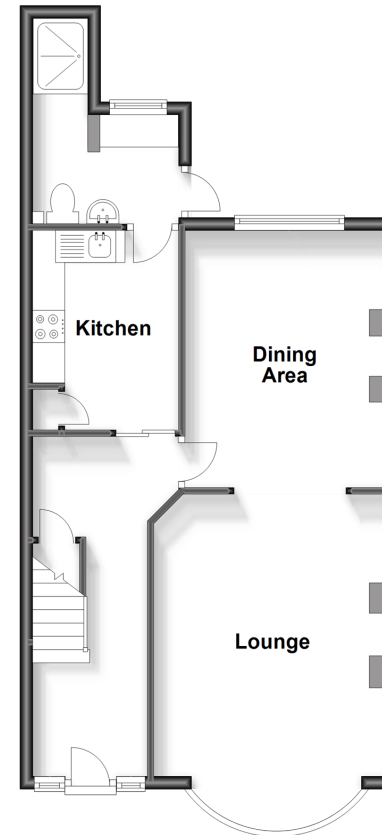
OUTSIDE

Rear Garden

Garage

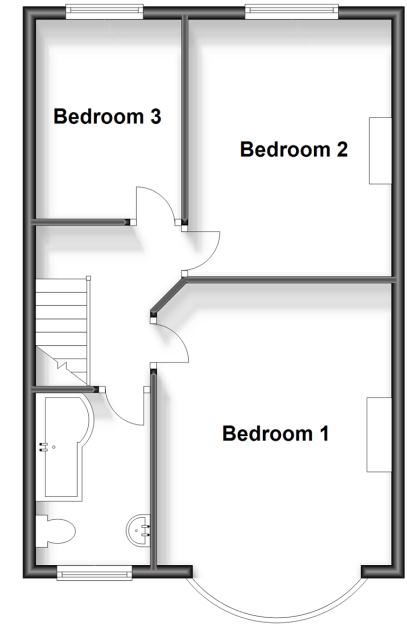
Ground Floor

Approx. 52.8 sq. metres (568.4 sq. feet)



First Floor

Approx. 47.4 sq. metres (510.6 sq. feet)



Call Portsmouth - 023 9266 1213 ■ cubittandwest.co.uk

- Legal advice should be taken to verify fixtures/fittings, planning, alterations and/or lease details
- Appliances & services are untested, dimensions are approximate and floor plans are not to scale
- Through a Homewise Home For Life Plan people aged 60+ can secure this property for up to 59% less, by purchasing a Lifetime Lease.



41634165/20231002/MH/MH