



**Price**  
**£240,000**

**Freehold**

2x  1x  2x 

**Walsingham Close,  
Portsmouth, Hampshire,  
PO6**

**OVER 60?**

Secure this property  
for up to **59% less!**

**cubitt&west**  
Helping you move forwards





## Main features

- Amazing residential or investment opportunity
- Allocated parking space
- Sunny aspect private rear garden
- Bright extended open plan living area
- Excellent transport links in and out of the city

## Accommodation

### GROUND FLOOR

Entrance Porch

Kitchen: 12'2 x 8'8 (3.71m x 2.64m)

Lounge/Dining Area: 26'9 x 12'2 (8.16m x 3.71m)

### FIRST FLOOR

Landing

Bedroom 1: 12'2 x 7'7 (3.71m x 2.31m)

Bedroom 2: 12'3 x 8'8 (3.74m x 2.64m)

Bathroom: 9'5 x 4'7 (2.87m x 1.40m)

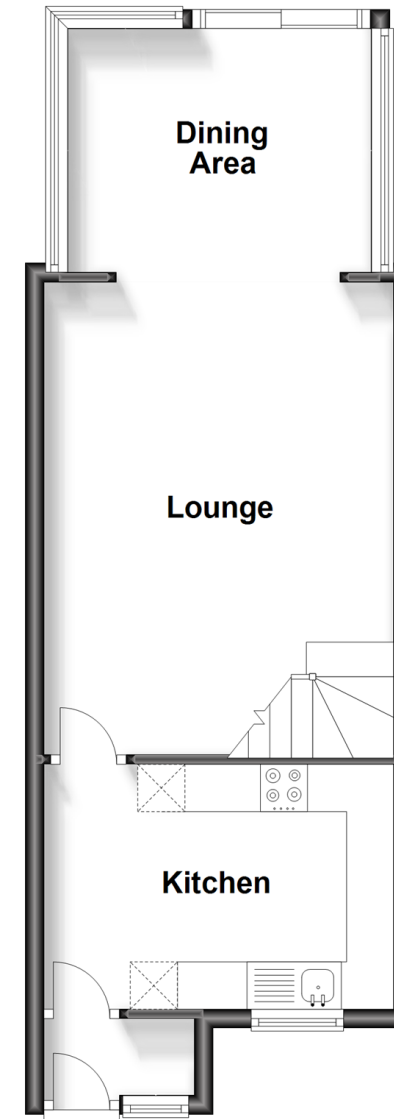
### OUTSIDE

Rear Garden

Allocated Parking

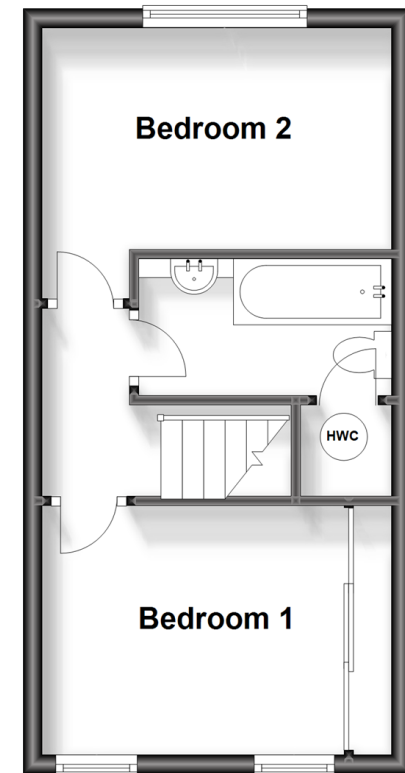
## Ground Floor

Approx. 38.7 sq. metres (416.5 sq. feet)



## First Floor

Approx. 28.3 sq. metres (304.3 sq. feet)



**Call Portsmouth - 023 9266 1213 ■ [cubittandwest.co.uk](http://cubittandwest.co.uk)**

- Legal advice should be taken to verify fixtures/fittings, planning, alterations and/or lease details
- Appliances & services are untested, dimensions are approximate and floor plans are not to scale
- Through a Homewise Home For Life Plan people aged 60+ can secure this property for up to 59% less, by purchasing a Lifetime Lease.



41634193/20230918/ZMG/ZMG