



OVER 60?

Secure this property
for up to **59% less!**

Price

£135,000

Leasehold

2x  1x  1x 

**Hampshire Street,
Portsmouth, Hampshire,
PO1**

cubitt&west
Helping you move forwards



Main features

- Spacious first floor apartment offered with no forward chain
- Generous lounge at rear of the apartment
- Potential for off road parking, subject to planning permission
- Private access via own front door
- Central location, close to shops, schools and travel links

Accommodation

FIRST FLOOR

Entrance Hallway

Lounge: 15'4 x 11'7 (4.68m x 3.53m)

Kitchen: 10'8 x 7'0 (3.25m x 2.14m)

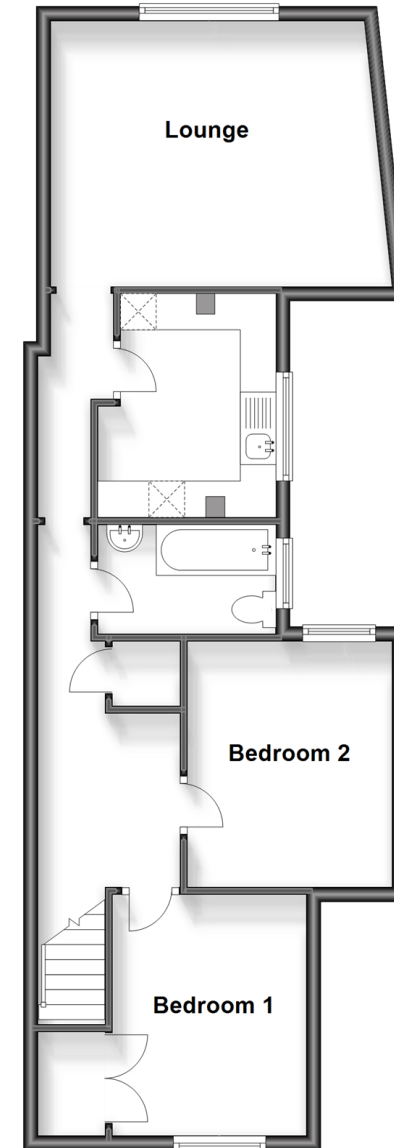
Bedroom 1: 11'0 x 8'11 (3.36m x 2.72m)

Bedroom 2: 10'11 x 9'6 (3.33m x 2.90m)

Bathroom: 8'5 x 4'10 (2.57m x 1.47m)

First Floor

Approx. 62.8 sq. metres (676.1 sq. feet)



Call Portsmouth - 023 9266 1213 ■ cubittandwest.co.uk

- Legal advice should be taken to verify fixtures/fittings, planning, alterations and/or lease details
- Appliances & services are untested, dimensions are approximate and floor plans are not to scale
- Through a Homewise Home For Life Plan people aged 60+ can secure this property for up to 59% less, by purchasing a Lifetime Lease.



41634204/20231113/JG/MH