



Guide Price
£55,000

Leasehold

2x  1x  1x 

**Farlington Marshes,
Eastern Road,
Portsmouth, Hampshire,
PO3**

cubitt&west
Helping you move forwards



Main features

- "Guide Price £55k-£60k"
- Off road parking for 2 vehicles and secured gated access
- Well presented throughout and chain free
- Situated on the popular Harbourside site
- Shoreline walks on the doorstep

Accommodation

GROUND FLOOR

Entrance Hallway

Lounge/Kitchen Area: 21'7 x 11'8
(6.58m x 3.56m)

Bedroom 1: 11'6 x 9'6 (3.51m x 2.90m)

En-Suite Shower Room

Bedroom 2: 8'4 x 5'3 (2.54m x 1.60m)

Shower Room: 6'3 x 3'8 (1.91m x 1.12m)

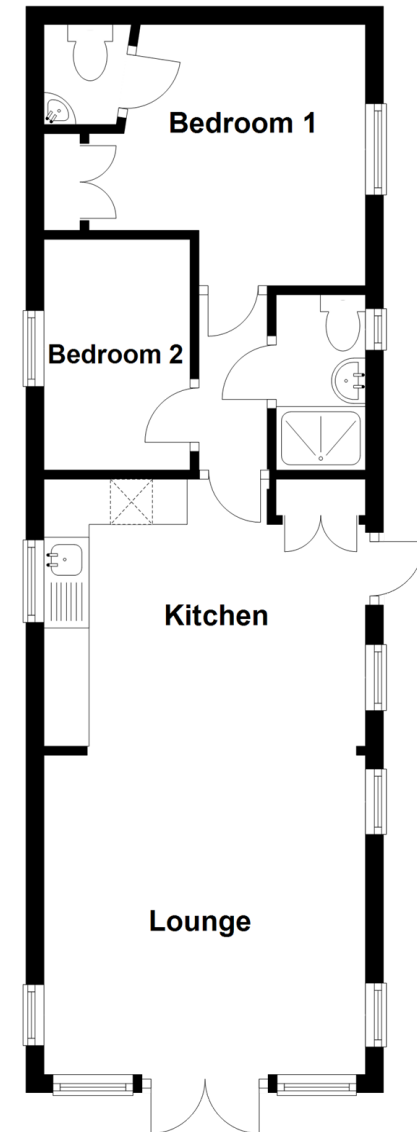
OUTSIDE

Off Road Parking

Side and Rear Gardens

Ground Floor

Approx. 41.3 sq. metres (444.6 sq. feet)



Call Portsmouth - 023 9266 1213 ■ cubittandwest.co.uk

- If buying to let, the energy rating will need to be improved to at least 'E' rating before you can let the property
- Legal advice should be taken to verify fixtures/fittings, planning, alterations and/or lease details
- Appliances & services are untested, dimensions are approximate and floor plans are not to scale



41634211/20240326/MO1/ZMG