



**Price**  
**£310,000**

**Freehold**

3x  2x  2x 

**Norwich Road,  
Portsmouth, Hampshire,  
PO6**

**OVER 60?**

Secure this property  
for up to **59% less!**

**cubitt&west**  
Helping you move forwards



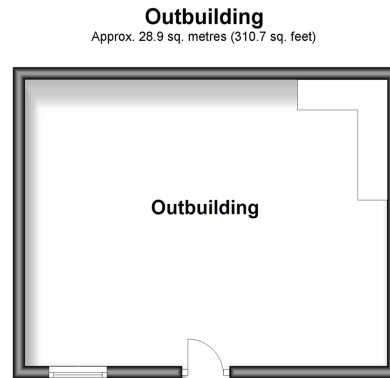
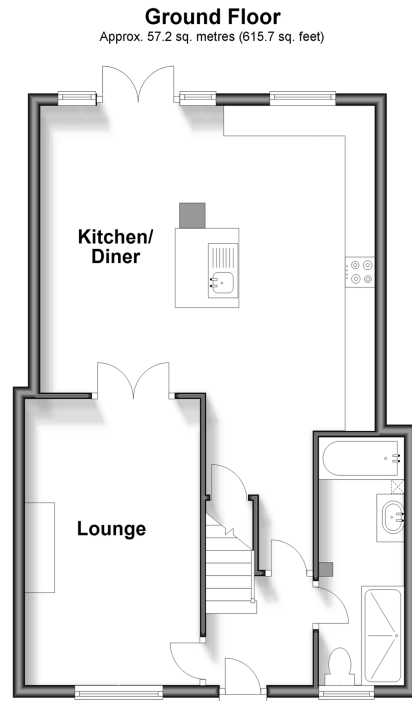
## Main features

- 4 piece family bathroom and en-suite to bedroom 1
- Off road parking space to the front
- Two storey rear extension and kitchen/dining space
- Large annexe in garden and side pedestrian access
- Short distance from Queen Alexander hospital

**Call Portsmouth - 023 9266 1213 ■ [cubittandwest.co.uk](http://cubittandwest.co.uk)**

■ Legal advice should be taken to verify fixtures/fittings, planning, alterations and/or lease details  
 ■ Through a Homewise Home For Life Plan people aged 60+ can secure this property for up to 59% less, by purchasing a Lifetime Lease.

■ Appliances & services are untested, dimensions are approximate and floor plans are not to scale



## Accommodation

### GROUND FLOOR

Entrance Hallway

Lounge: 14'4 x 9'7 (4.37m x 2.92m)

Kitchen/Diner: (L-shaped) 25'8 x 17'9 (7.83m x 5.41m) plus 16'3 x 5'1 (4.96m x 1.55m)

Bathroom: 13'3 x 4'8 (4.04m x 1.42m)

### FIRST FLOOR

Landing

Bedroom 1: 14'2 x 9'1 (4.32m x 2.77m)

En-Suite Shower Room: 13'5 x 4'8 (4.09m x 1.42m)

Bedroom 2: 9'8 x 9'3 (2.95m x 2.82m)

Bedroom 3: 10'3 x 6'9 (3.13m x 2.06m)

### OUTSIDE

Off Road Parking

Rear Garden

Outbuilding



41634224/20231121/ZMG/ZMG