



Price
£275,000

Freehold

3x  1x  1x 

**Fearon Road, North End,
Portsmouth, Hampshire,
PO2**

cubitt&west
Helping you move forwards



Main features

- Large bay and forecourt property
- Spacious accommodation throughout & extended to the rear
- Sunny aspect private rear garden, ideal for entertaining family & friends
- Outbuilding with power
- Excellent school catchment area

Accommodation

GROUND FLOOR

Entrance Hallway
 Lounge: 14'1 x 12'4 (4.30m x 3.76m)
 Dining/Family Area: 15'0 x 9'5 (4.58m x 2.87m)
 Kitchen: 18'3 x 10'11 (5.57m x 3.33m)

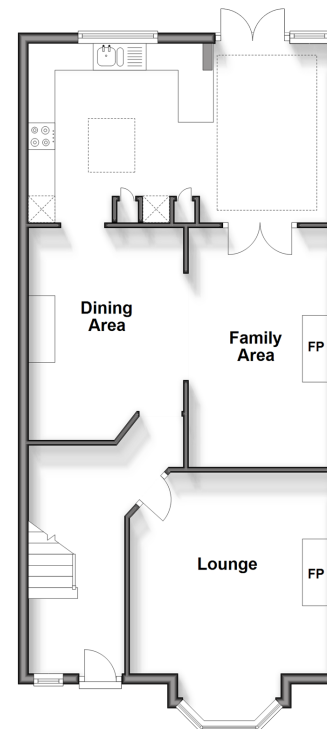
FIRST FLOOR

Landing
 Bedroom 1: 14'11 x 12'5 (4.55m x 3.79m)
 Bedroom 2: 11'4 x 9'5 (3.46m x 2.87m)
 Bedroom 3: 15'1 x 6'11 (4.60m x 2.11m)
 Bathroom

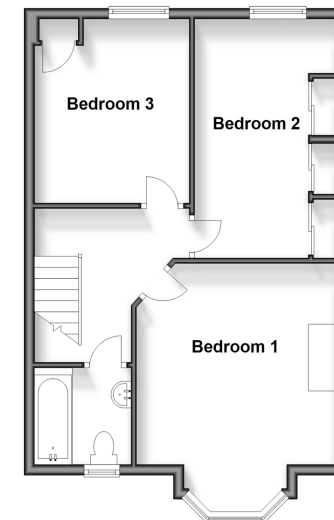
OUTSIDE

Front Forecourt
 Rear Garden

Ground Floor
 Approx. 68.0 sq. metres (731.5 sq. feet)



First Floor
 Approx. 48.4 sq. metres (520.8 sq. feet)



Call Portsmouth - 023 9266 1213 ■ cubittandwest.co.uk

■ Legal advice should be taken to verify fixtures/fittings, planning, alterations and/or lease details

■ Appliances & services are untested, dimensions are approximate and floor plans are not to scale



41634247/20231115/MO1/ZMG