



Price
£180,000

Leasehold

2x  1x  1x 

**Laburnum Grove,
Portsmouth, Hampshire,
PO2**

OVER 60?

Secure this property
for up to **59% less!**

cubitt&west
Helping you move forwards



Main features

- Immaculately presented maisonette, split over two floors
- Modern bathroom and kitchen
- Flexible living accommodation
- Long lease
- Perfect starter home, ready to move straight into

Accommodation

FIRST FLOOR

Entrance Hallway

Kitchen: 9'10 x 7'11 (3.00m x 2.41m)

Bedroom 1: 18'10 x 14'5 (5.74m x 4.40m)

Bedroom 2: 11'6 x 10'11 (3.51m x 3.33m)

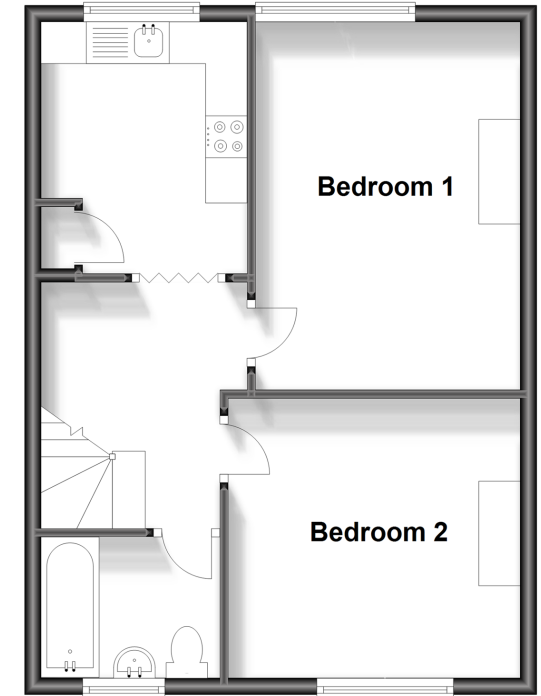
Bathroom

SECOND FLOOR

Lounge: 18'6 x 13'4 (5.64m x 4.07m)

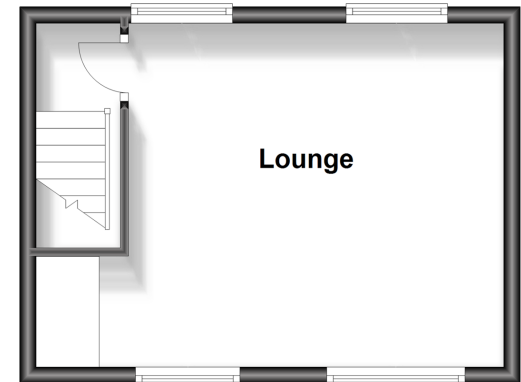
First Floor

Approx. 45.4 sq. metres (488.3 sq. feet)



Second Floor

Approx. 23.2 sq. metres (250.0 sq. feet)



Call Portsmouth - 023 9266 1213 ■ cubittandwest.co.uk

- The seller is a person connected with Cubitt & West as defined in the Estate Agents Act 1979
- Legal advice should be taken to verify fixtures/fittings, planning, alterations and/or lease details
- Appliances & services are untested, dimensions are approximate and floor plans are not to scale
- Through a Homewise Home For Life Plan people aged 60+ can secure this property for up to 59% less, by purchasing a Lifetime Lease.



41634249/20240301/ZMG/MH