



**Guide Price**  
**£380,000**

**Freehold**

4x  2x  3x 

**Randolph Road,  
Portsmouth, Hampshire,  
PO2**

**OVER 60?**

Secure this property  
for up to **59% less!**

**cubitt & west**  
Helping you move forwards





## Main features

- **"Guide price £380,000- £385,000"**
- **Off-Road parking and permission to drop kerb**
- **Two bathrooms and four double bedrooms**
- **Low maintenance sunny aspect garden**
- **Amazing school catchment area**
- **Excellent transport links and walking distance to local amenities**

## Accommodation

### GROUND FLOOR

Entrance Hallway  
 Lounge: 14'1 x 12'3 (4.30m x 3.74m)  
 Dining Room: 12'5 x 11'9 (3.79m x 3.58m)  
 Conservatory (L shaped): 15'8 x 12'9 (4.78m x 3.89m)  
 Separate Toilet  
 Kitchen: 15'6 x 7'4 (4.73m x 2.24m)

### FIRST FLOOR

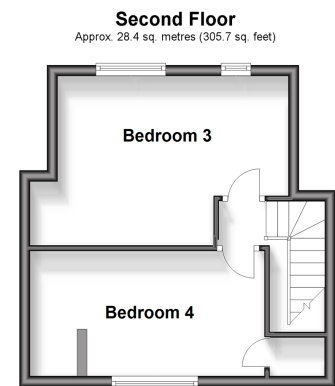
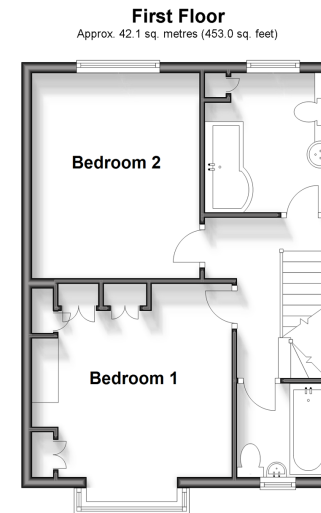
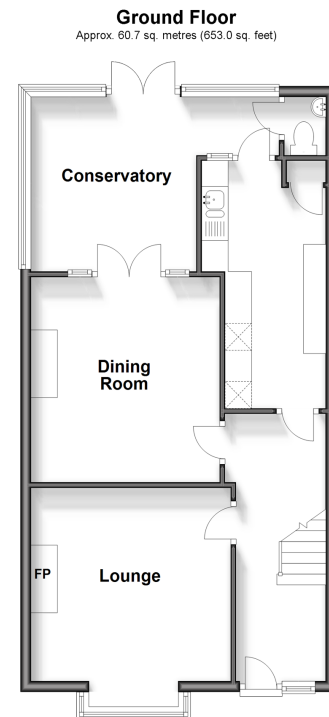
Landing  
 Bathroom 1  
 Bedroom 1: 14'3 x 11'3 (4.35m x 3.43m)  
 Bedroom 2: 12'9 x 10'3 (3.89m x 3.13m)  
 Bathroom 2

### SECOND FLOOR

Landing  
 Bedroom 3: 14'3 x 10'4 (4.35m x 3.15m)  
 Bedroom 4: 14'5 x 7'8 (4.40m x 2.34m)

### OUTSIDE

Front Garden  
 Rear Garden  
 Off-Road Parking



**Call Portsmouth - 023 9266 1213 ■ cubittandwest.co.uk**

■ Legal advice should be taken to verify fixtures/fittings, planning, alterations and/or lease details  
 ■ Through a Homewise Home For Life Plan people aged 60+ can secure this property for up to 59% less, by purchasing a Lifetime Lease.

■ Appliances & services are untested, dimensions are approximate and floor plans are not to scale



41634293/20240325/MO1/ZMG