



**Price**  
**£240,000**

**Freehold**

3x  1x  1x 

**Seafield Road,  
Portsmouth, Hampshire,  
PO3**

**OVER 60?**

Secure this property  
for up to **59% less!**

**cubitt&west**  
Helping you move forwards





## Main features

- Bay and forecourt home ready to move straight into
- Two separate living spaces with lean to at the rear
- Downstairs cloakroom and upstairs bathroom
- Private rear garden
- Ideal first time purchase

## Accommodation

### GROUND FLOOR

Entrance Hallway

Lounge: 14'6 x 9'11 (4.42m x 3.02m)

Kitchen: 11'4 x 7'9 (3.46m x 2.36m)

Dining Room: 12'7 x 9'3 (3.84m x 2.82m)

Separate Toilet

Conservatory: 9'10 x 9'7 (3.00m x 2.92m)

### FIRST FLOOR

Landing

Bedroom 1: 11'11 x 11'8 (3.63m x 3.56m)

Bedroom 2: 11'5 x 7'9 (3.48m x 2.36m)

Bedroom 3: 9'2 x 6'0 (2.80m x 1.83m)

Bathroom

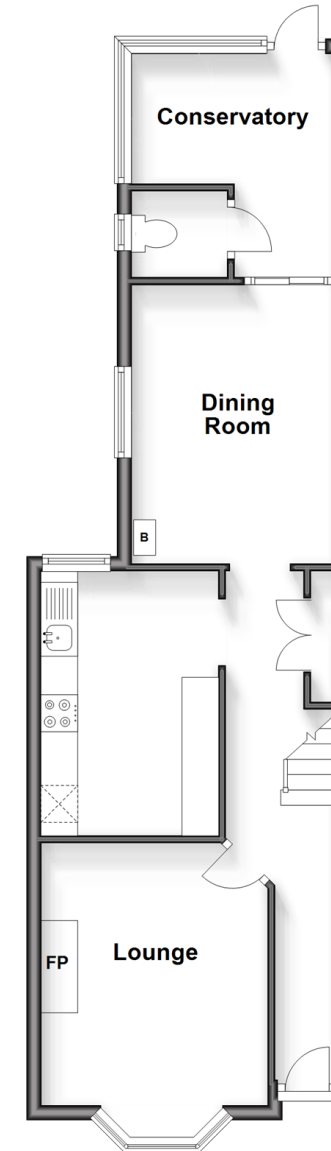
### OUTSIDE

Front Forecourt

Rear Garden

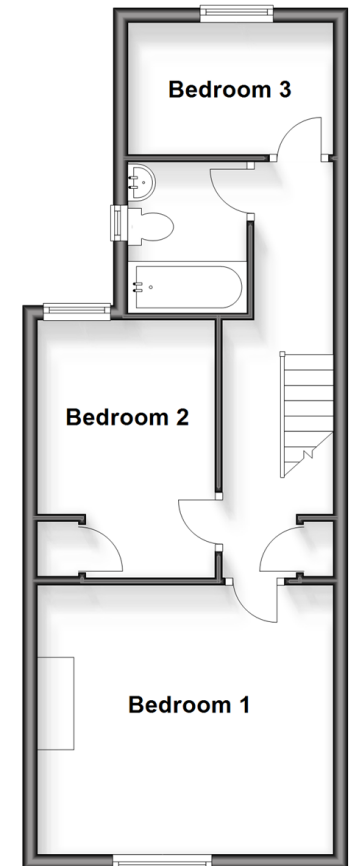
### Ground Floor

Approx. 48.5 sq. metres (522.1 sq. feet)



### First Floor

Approx. 40.3 sq. metres (434.1 sq. feet)



**Call Portsmouth - 023 9266 1213 ■ [cubittandwest.co.uk](http://cubittandwest.co.uk)**

- Legal advice should be taken to verify fixtures/fittings, planning, alterations and/or lease details
- Appliances & services are untested, dimensions are approximate and floor plans are not to scale
- Through a Homewise Home For Life Plan people aged 60+ can secure this property for up to 59% less, by purchasing a Lifetime Lease.



41634350/20240212/MO1/MH