



OVER 60?

You could get up to
59% off the price!*

Price
£300,000

Freehold

3x  1x  2x 

**Ringwood Road,
Southsea, Portsmouth,
Hampshire, PO4**

cubitt&west
Helping you move forwards



Main features

- Family home situated in a popular area
- Close to Bransbury Park, shops and schools
- Excellent transport links in and out of the area
- Conservatory leading onto a sunny aspect rear garden
- Minutes for Southsea seafront

Accommodation

GROUND FLOOR

Entrance Hallway

Lounge: 14'1 x 10'5 (4.30m x 3.18m)

Dining Area: 13'6 x 9'5 (4.12m x 2.87m)

Kitchen: 11'3 x 9'0 (3.43m x 2.75m)

Conservatory: 10'7 x 7'8 (3.23m x 2.34m)

FIRST FLOOR

Landing

Bedroom 1: 13'2 x 8'8 (4.02m x 2.64m)

Bedroom 2: 10'1 x 7'1 (3.08m x 2.16m)

Bedroom 3: 11'5 x 10'9 (3.48m x 3.28m)

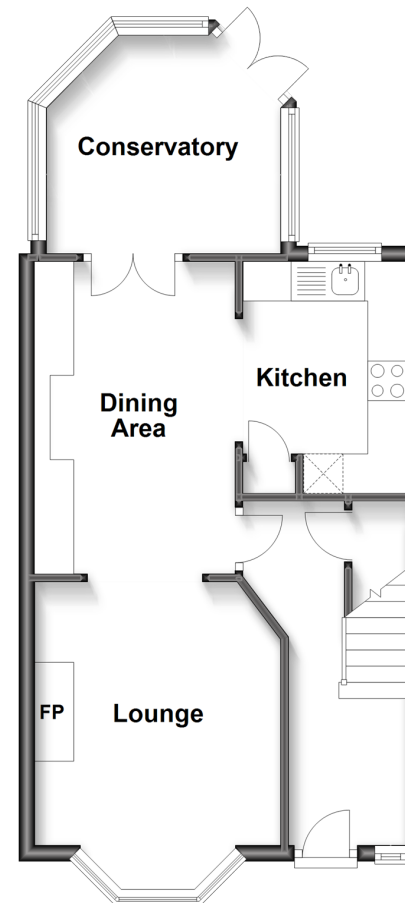
Bathroom: 6'9 x 6'6 (2.06m x 1.98m)

OUTSIDE

Rear Garden

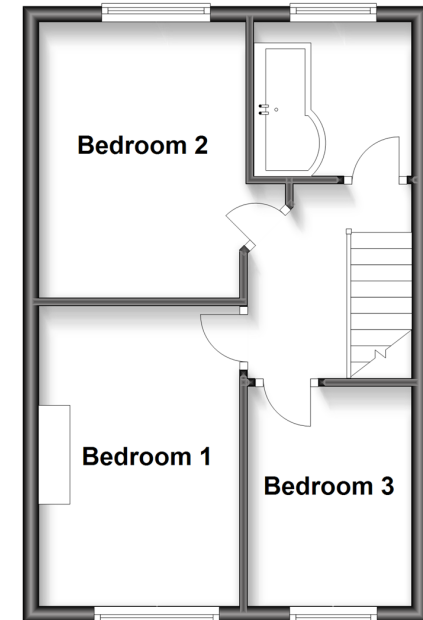
Ground Floor

Approx. 43.1 sq. metres (463.6 sq. feet)



First Floor

Approx. 35.1 sq. metres (377.7 sq. feet)



Call Southsea - 023 9229 6396 ■ cubittandwest.co.uk

- Legal advice should be taken to verify fixtures/fittings, planning, alterations and/or lease details
- Appliances & services are untested, dimensions are approximate and floor plans are not to scale
- Our Homewise partnership offer a 'Home for Life' plan to buyers over 60, granting a lifetime lease for your protection and reducing the purchase price by up to 59%



4225958/20220930/MO1/AML