



OVER 60?

Secure this property
for up to **59% less!**

Price

£270,000

Freehold

2x  1x  2x 

**Lawson Road, Southsea,
Hampshire, PO5**

cubitt&west
Helping you move forwards



Main features

- Separate lounge and dining room
- Upstairs bathroom with spacious bath & separate shower cubicle
- Enclosed southerly facing rear garden
- Character features including working fireplaces
- Close to shops, parks, restaurants and the shore line

Accommodation

GROUND FLOOR

Entrance Hallway

Dining Room: 10'2 x 8'1 (3.10m x 2.47m)

Lounge: 13'3 x 11'4 (4.04m x 3.46m)

Kitchen: 11'3 x 8'2 (3.43m x 2.49m)

FIRST FLOOR

Landing

Bedroom 1: 13'5 x 10'6 (4.09m x 3.20m)

Bedroom 2: 11'6 x 10'3 (3.51m x 3.13m)

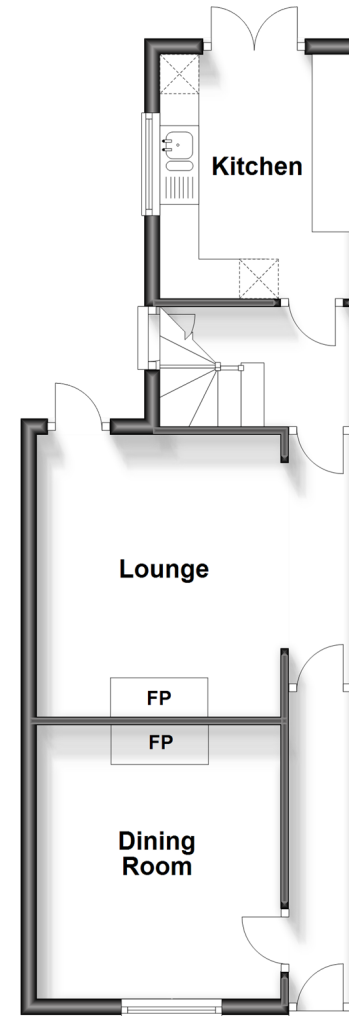
Bathroom: 10'4 x 8'3 (3.15m x 2.52m)

OUTSIDE

Rear Garden

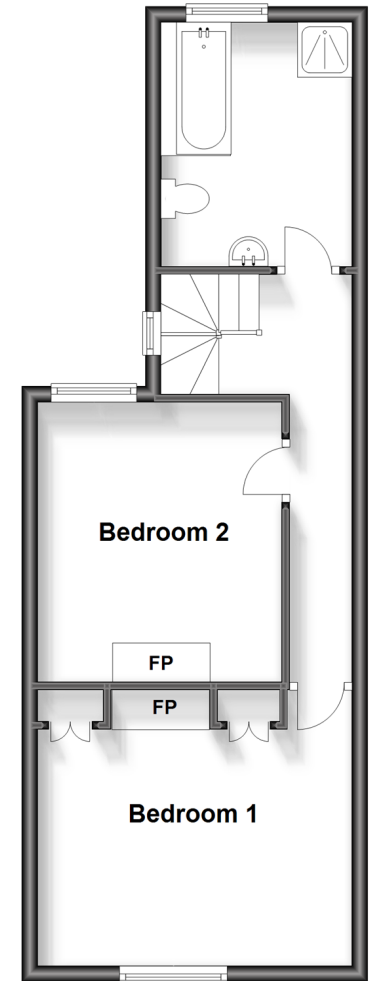
Ground Floor

Approx. 40.7 sq. metres (438.6 sq. feet)



First Floor

Approx. 40.7 sq. metres (438.6 sq. feet)



Call Southsea - 023 9229 6396 ■ cubittandwest.co.uk

- Legal advice should be taken to verify fixtures/fittings, planning, alterations and/or lease details
- Appliances & services are untested, dimensions are approximate and floor plans are not to scale
- Through a Homewise Home For Life Plan people aged 60+ can secure this property for up to 59% less, by purchasing a Lifetime Lease.



42226566/20230627/MO1/EG