



Price
£190,000

Leasehold

1x  1x  1x 

**Elm Grove, Southsea,
Hampshire, PO5**

OVER 60?

You could get up to
59% off the price!*

cubitt&west
Helping you move forwards



Main features

- Beautifully refurbished ground floor apartment
- Sunny aspect spacious private garden
- Centrally located to local shops, amenities, bars and restaurants
- A wonderful opportunity for first time buyers or investors alike
- Must be viewed

Accommodation

GROUND FLOOR

Entrance Hallway

Kitchen: 9'5 x 9'1 (2.87m x 2.77m)

Lounge: 13'1 x 12'7 (3.99m x 3.84m)

Bedroom : 13'2 x 11'9 (4.02m x 3.58m)

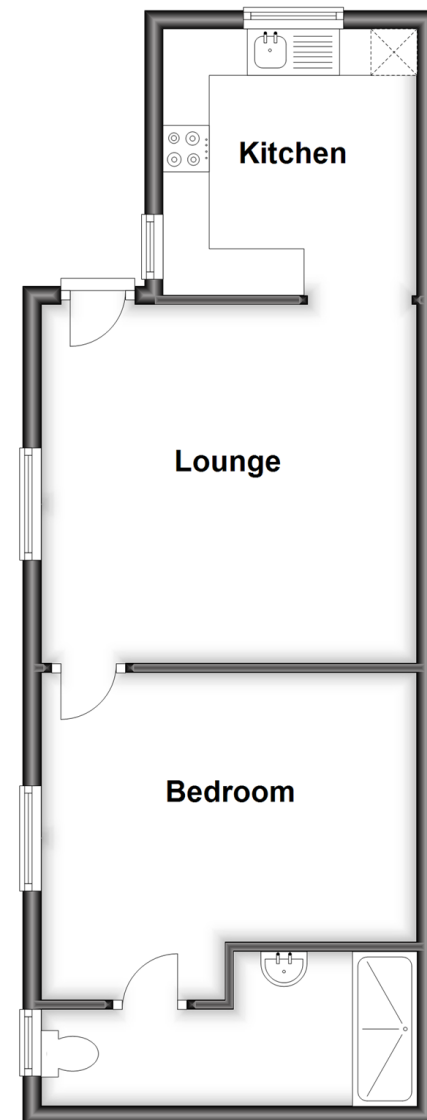
Shower Room

OUTSIDE

Rear Garden

Ground Floor

Approx. 43.3 sq. metres (466.6 sq. feet)



Call Southsea - 023 9229 6396 ■ cubittandwest.co.uk

- Legal advice should be taken to verify fixtures/fittings, planning, alterations and/or lease details
- Appliances & services are untested, dimensions are approximate and floor plans are not to scale
- Our Homewise partnership offer a 'Home for Life' plan to buyers over 60, granting a lifetime lease for your protection and reducing the purchase price by up to 59%



42226647/20220704/MO1/SA