



Guide Price
£130,000

Leasehold

1x  1x  1x 

**Priory View, Victoria
Road, Portsmouth,
Hampshire, PO5**

OVER 60?

Secure this property
for up to **59% less!**

cubitt&west
Helping you move forwards



Main features

- "Offers in excess of "£130,000"
- Fifth floor apartment with allocated parking space
- Views overlooking the Solent
- Offered with no forward chain
- A great first time purchase, investment or downsize

Accommodation

FIFTH FLOOR

Entrance Hallway

Lounge/Diner: 17'4 x 10'8 (5.29m x 3.25m)

Balcony

Kitchen: 10'1 x 6'6 minimum (3.08m x 1.98m)

Bedroom: 13'4 x 8'3 (4.07m x 2.52m)

Bathroom: 6'7 x 5'6 (2.01m x 1.68m)

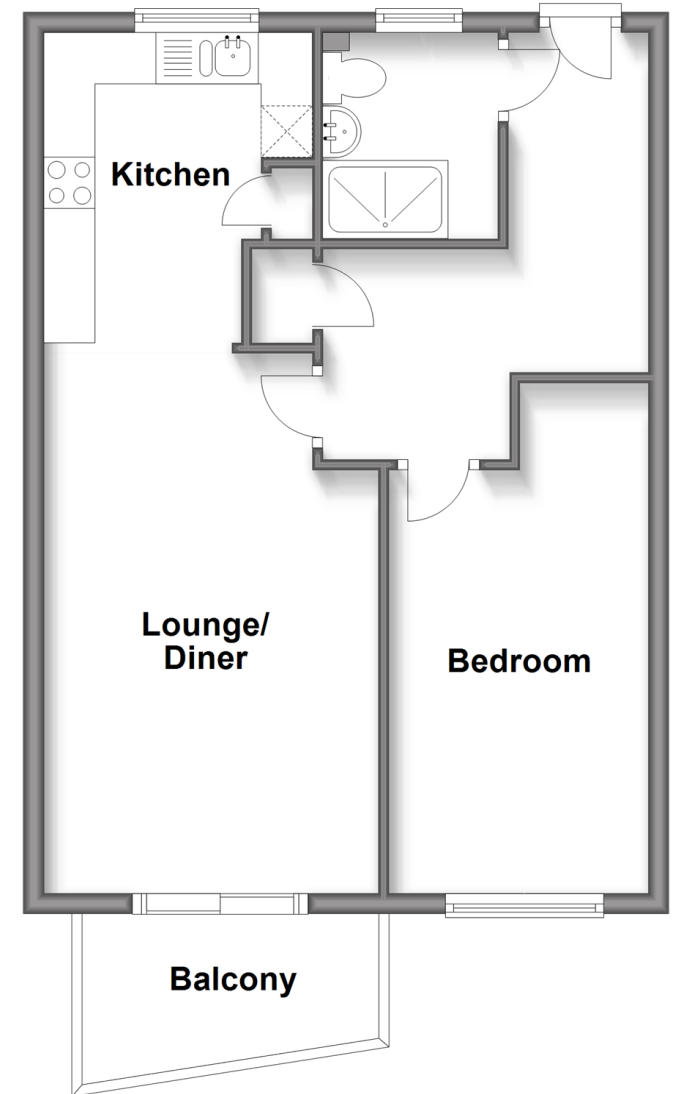
OUTSIDE

Allocated Parking Space

Communal Garden

Fifth Floor

Approx. 49.5 sq. metres (532.8 sq. feet)



Call Southsea - 023 9229 6396 ■ cubittandwest.co.uk

- Legal advice should be taken to verify fixtures/fittings, planning, alterations and/or lease details
- Appliances & services are untested, dimensions are approximate and floor plans are not to scale
- Through a Homewise Home For Life Plan people aged 60+ can secure this property for up to 59% less, by purchasing a Lifetime Lease.



42226653/20240328/MO1/AML