



Price
£325,000

Freehold

3x  1x  2x 

**Alverstone Road,
Southsea, Hampshire,
PO4**

OVER 60?

Secure this property
for up to **59% less!**

cubitt&west
Helping you move forwards



Main features

- A stunning family home
- Open plan kitchen/dining area leading to utility & lean to
- Sunny aspect rear garden with potential
- Excellent transport links in and out of the area
- Close to all amenities, parks, shops and walks

Accommodation

GROUND FLOOR

Entrance Hallway

Lounge: 13'2 x 11'9 (4.02m x 3.58m)

Dining Area: 10'3 x 9'9 (3.13m x 2.97m)

Kitchen: 12'9 x 8'8 (3.89m x 2.64m)

Utility Room: 8'3 x 8'1 (2.52m x 2.47m)

Separate Toilet

Lean To: 7'1 x 6'5 (2.16m x 1.96m)

FIRST FLOOR

Landing

Bedroom 1: 11'9 x 11'8 (3.58m x 3.56m)

Bedroom 2: 13'1 x 8'8 (3.99m x 2.64m)

Bedroom 3: 10'3 x 8'8 (3.13m x 2.64m)

Bathroom: 5'9 x 5'5 (1.75m x 1.65m)

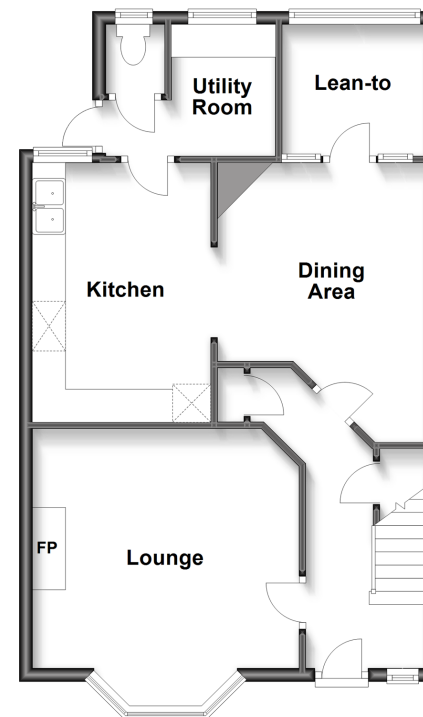
OUTSIDE

Front Forecourt

Rear Garden

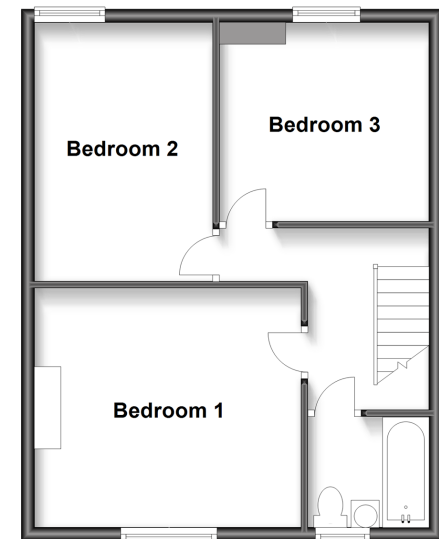
Ground Floor

Approx. 58.1 sq. metres (625.9 sq. feet)



First Floor

Approx. 45.7 sq. metres (491.9 sq. feet)



Call Southsea - 023 9229 6396 ■ cubittandwest.co.uk

- Legal advice should be taken to verify fixtures/fittings, planning, alterations and/or lease details
- Appliances & services are untested, dimensions are approximate and floor plans are not to scale
- Through a Homewise Home For Life Plan people aged 60+ can secure this property for up to 59% less, by purchasing a Lifetime Lease.



42226666/20221205/AML/AML