



Price
£165,000

Leasehold

2x  1x  1x 

**Hereford Lodge,
Hereford Road,
Southsea, Hampshire,
PO5**

OVER 60?

Secure this property
for up to **59% less!**

cubitt&west
Helping you move forwards



Main features

- First floor apartment with period features
- Centrally located and close to shops, bars and restaurants
- Neutral decor throughout
- A great opportunity for first time buyers and investors alive
- Viewing highly recommended

Accommodation

FIRST FLOOR

Entrance Hallway

Lounge: 17'1 max x 16'0 max (5.21m x 4.88m)

Kitchen: 7'7 x 6'8 (2.31m x 2.03m)

Bedroom 1: 10'2 x 9'4 (3.10m x 2.85m)

Bedroom 2: 14'4 x 5'9 (4.37m x 1.75m)

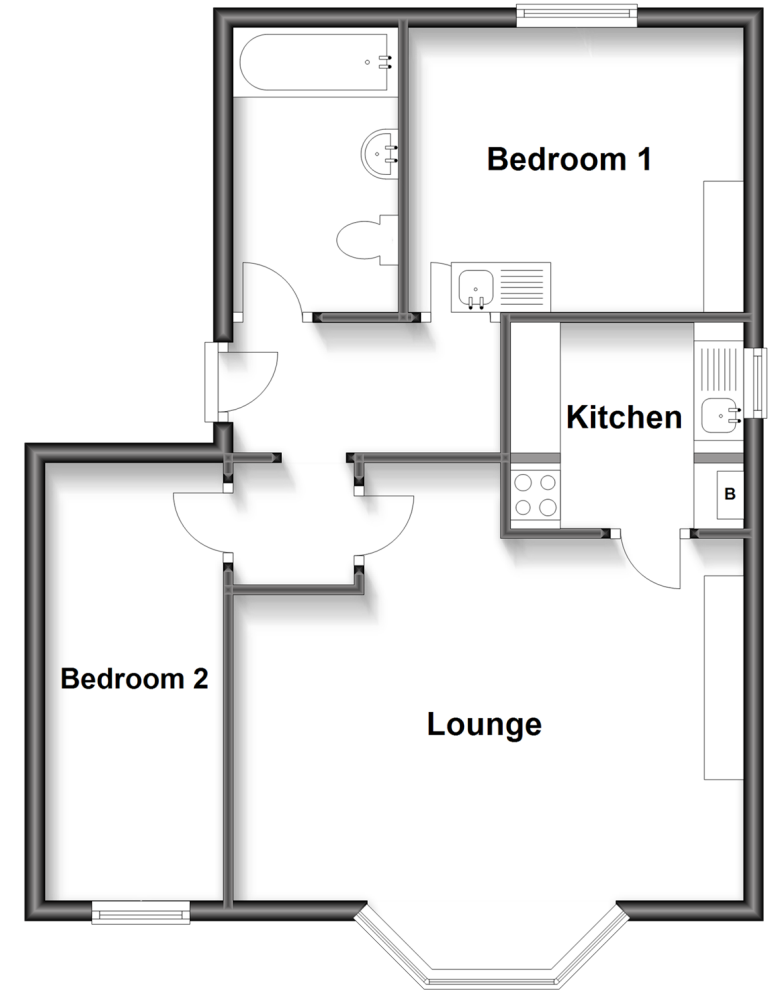
Bathroom: 9'3 x 5'5 (2.82m x 1.65m)

OUTSIDE

Share of parking

First Floor

Approx. 53.8 sq. metres (578.8 sq. feet)



Call Southsea - 023 9229 6396 ■ cubittandwest.co.uk

- Legal advice should be taken to verify fixtures/fittings, planning, alterations and/or lease details
- Appliances & services are untested, dimensions are approximate and floor plans are not to scale
- Through a Homewise Home For Life Plan people aged 60+ can secure this property for up to 59% less, by purchasing a Lifetime Lease.



42226701/20240425/JT/SA