



Price

£200,000

Leasehold

2x  1x  1x 

**Granada Road,
Southsea, Hampshire,
PO4**

cubitt&west
Helping you move forwards

Main features

- Modern ground floor apartment in a popular location
- Minutes from Canoe lake and the seafront
- Excellent opportunity for landlords and investors
- Close to all local amenities
- Being sold as 1 of 6 apartments

Accommodation

GROUND FLOOR

Entrance Hallway: 17'0 x 6'2 (5.19m x 1.88m)

Bathroom: 6'0 x 6'0 (1.83m x 1.83m)

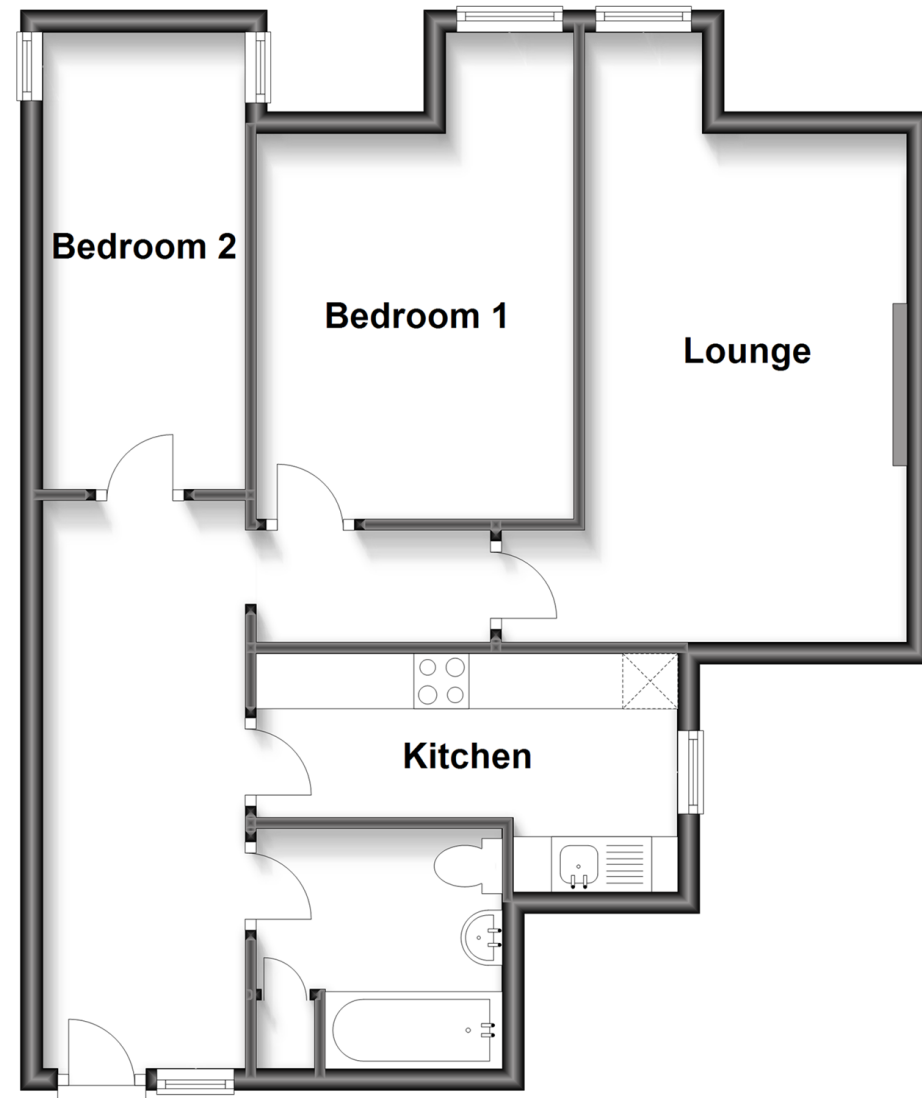
Kitchen: 12'10 x 7'0 (3.91m x 2.14m)

Lounge: 14'10 x 11'10 (4.52m x 3.61m)

Bedroom 1: 14'0 x 9'0 (4.27m x 2.75m)

Bedroom 2: 13'10 x 6'0 (4.22m x 1.83m)

Ground Floor
Approx. 59.8 sq. metres (643.7 sq. feet)



Call Southsea - 023 9229 6396 ■ cubittandwest.co.uk

- No vacant possession due to protected tenant in situ, please contact us before proceeding
- Legal advice should be taken to verify fixtures/fittings, planning, alterations and/or lease details

- If buying to let, the energy rating will need to be improved to at least 'E' rating before you can let the property
- Appliances & services are untested, dimensions are approximate and floor plans are not to scale