



Guide Price
£220,000

Freehold

2x  1x  1x 

**Talbot Road, Southsea,
Hampshire, PO4**

cubitt&west
Helping you move forwards



Main features

- End of terraced property situated in a popular central location
- Good transport links in and out of the area
- Close to all your daily amenities
- Perfect for a first time buyer or investor
- Minutes from main line train station in all directions

Accommodation

GROUND FLOOR

Entrance Hallway

Lounge: 9'6 x 9'5 (2.90m x 2.87m)

Dining Room: 10'4 x 9'2 (3.15m x 2.80m)

Kitchen: 11'5 x 8'1 (3.48m x 2.47m)

Bathroom: 8'3 x 5'9 (2.52m x 1.75m)

FIRST FLOOR

Landing

Bedroom 1: 12'6 x 9'4 (3.81m x 2.85m)

Bedroom 2: 12'8 x 10'5 (3.86m x 3.18m)

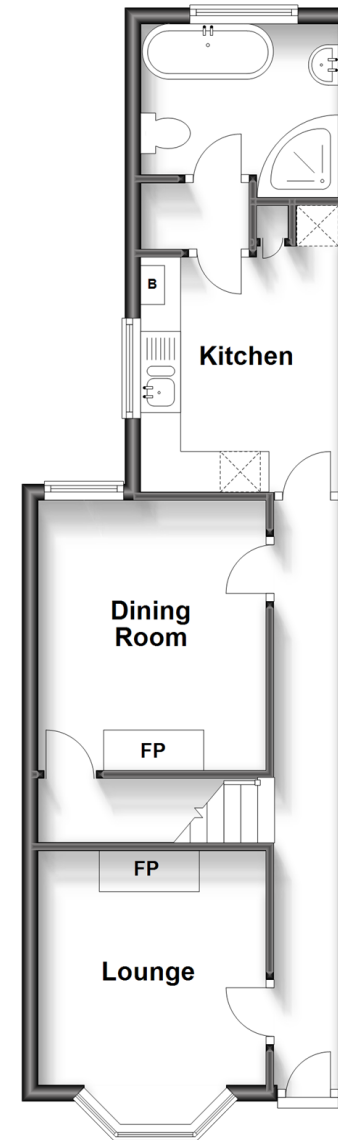
OUTSIDE

Front Forecourt

Rear Garden

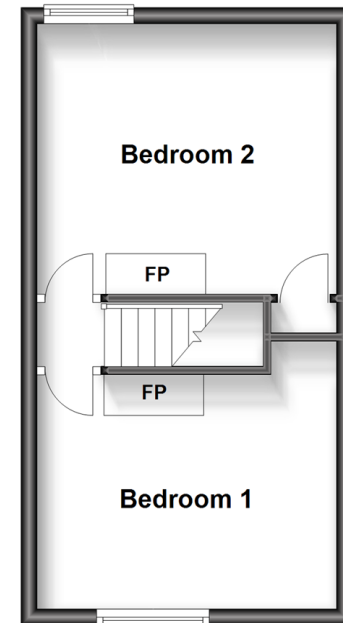
Ground Floor

Approx. 41.8 sq. metres (450.0 sq. feet)



First Floor

Approx. 27.1 sq. metres (291.5 sq. feet)



Call Southsea - 023 9229 6396 ■ cubittandwest.co.uk

- Legal advice should be taken to verify fixtures/fittings, planning, alterations and/or lease details
- Appliances & services are untested, dimensions are approximate and floor plans are not to scale



42226902/20230829/MO1/AML