



Price
£250,000

Freehold

2x  1x  1x 

**Rugby Road, Southsea,
Hampshire, PO5**

OVER 60?

Secure this property
for up to **59% less!**

cubitt&west
Helping you move forwards



Main features

- Victorian house with upstairs bathroom & ground floor cloakroom
- Enclosed southerly aspect rear garden
- Deceptively spacious accommodation throughout
- Close proximity to Southsea seafront & main line station
- Offered with no chain

Accommodation

GROUND FLOOR

Entrance Hallway

Lounge: 22'3 x 13'2 (6.79m x 4.02m)

Kitchen and Utility Area: 19'8 x 8'1 (6.00m x 2.47m)

Cloakroom

FIRST FLOOR

Landing

Bedroom 1: 13'2 x 10'9 (4.02m x 3.28m)

Bedroom 2: 11'0 x 10'2 (3.36m x 3.10m)

Bathroom: 9'3 x 8'1 (2.82m x 2.47m)

OUTSIDE

Rear Garden

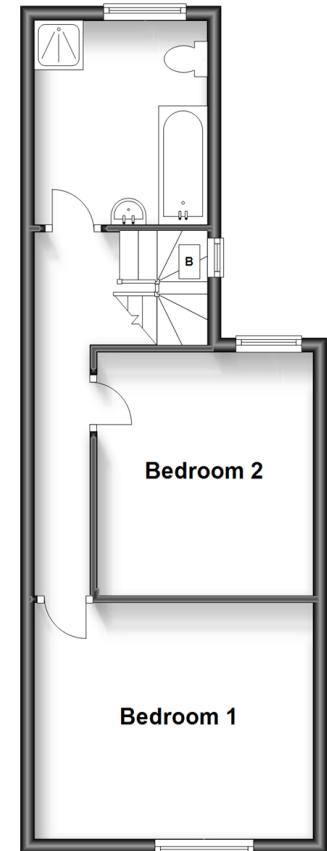
Ground Floor

Approx. 48.5 sq. metres (522.0 sq. feet)



First Floor

Approx. 39.2 sq. metres (421.6 sq. feet)



Call Southsea - 023 9229 6396 ■ cubittandwest.co.uk

- Legal advice should be taken to verify fixtures/fittings, planning, alterations and/or lease details
- Appliances & services are untested, dimensions are approximate and floor plans are not to scale
- Through a Homewise Home For Life Plan people aged 60+ can secure this property for up to 59% less, by purchasing a Lifetime Lease.



42226949/20230801/MO1/EG