



Price
£850,000

Freehold

7x  3x  2x 

**Livingstone Road,
Southsea, Hampshire,
PO5**

OVER 60?

Secure this property
for up to **59% less!**

cubitt&west
Helping you move forwards



Accommodation

BASEMENT

Basement Room

GROUND FLOOR

Entrance Hallway
Dining Room: 16'6 x 16'4 (5.03m x 4.98m)
Lounge: 16'3 x 12'0 (4.96m x 3.66m)
Kitchen/Breakfast Room: 20'1 x 20'1 (6.13m x 6.13m)
Shower Room
Utility Room

FIRST FLOOR

Landing
Bedroom 1: 16'7 x 11'4 (5.06m x 3.46m)
En-Suite Shower Room: 7'4 x 4'4 (2.24m x 1.32m)
Bedroom 2: 15'5 x 8'7 (4.70m x 2.62m)
Bedroom 3: 15'8 x 12'2 (4.78m x 3.71m)
En-Suite Bathroom: 10'8 x 6'3 (3.25m x 1.91m)

SECOND FLOOR

Landing
Bedroom 4: 10'5 x 8'8 (3.18m x 2.64m)
Bedroom 5: 13'4 x 9'9 (4.07m x 2.97m)

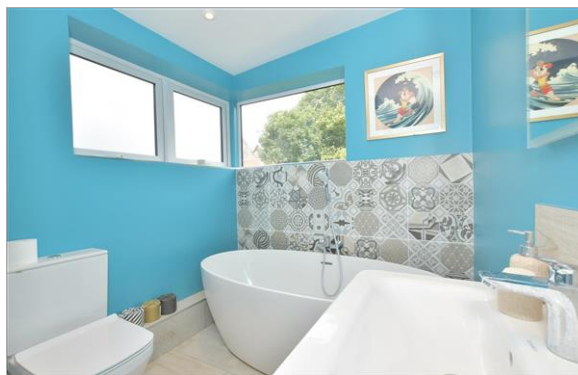
Bedroom 6: 12'7 x 11'10 (3.84m x 3.61m)
Cloakroom
Storage

THIRD FLOOR

Bedroom 7

OUTSIDE

Front Garden
Driveway
Rear Garden



Main features

- A stunning period residence
- Impressive ground floor living area
- First floor bathroom with added steam room
- Beautiful mature well kept sunny aspect rear garden
- Good road links in and out of the city for anybody commuting
- Close to all your local daily amenities



Nearest Schools

Primary Schools: Cottage Grove Primary 0.3 miles, Somers Park Primary 0.3 miles, Fernhurst Junior School 0.4 miles
Secondary Schools: Priory School (Specialist Sports College) 0.3 miles, St John's College 0.3 miles



Transport Information

Train Stations: Fratton 0.4 miles, Portsmouth & Southsea 0.7 miles, Portsmouth Harbour 1.2 miles



Address

Livingstone Road, Southsea, Hampshire, PO5



Directions

For directions to this property please contact us.



cubitt&west
Helping you move forwards

Call Southsea Branch 023 9229 6396 ■ cubittandwest.co.uk



■ Legal advice should be taken to verify fixtures/fittings, planning, alterations and/or lease details ■ Appliances & services are untested, dimensions are approximate and floor plans are not to scale
■ Through a Homewise Home For Life Plan people aged 60+ can secure this property for up to 59% less, by purchasing a Lifetime Lease.



42226962/20230830/LH19/AML