



OVER 60?

Secure this property
for up to **59% less!**

Price

£140,000

Leasehold

1x  1x  1x 

**St. Andrew's Road,
Southsea, Hampshire,
PO5**

cubitt&west
Helping you move forwards



Main features

- Ground floor flat with its own garden
- Close to all amenities
- Excellent transport links
- Minutes from Albert road and Palmerston road
- Perfect for first time buyers, downsizer or investors

Accommodation

LOWER GROUND FLOOR

Entrance Hallway

Lounge: 16'6 x 11'8 (5.03m x 3.56m)

Bathroom

Bedroom : 10'4 x 10'2 (3.15m x 3.10m)

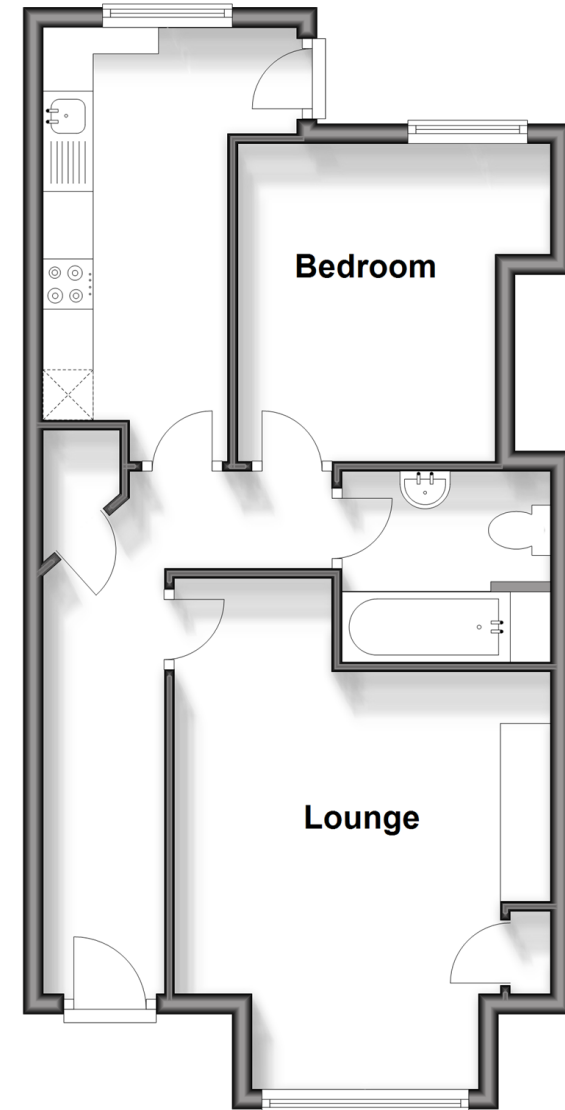
Kitchen: 14'4 x 8'2 (4.37m x 2.49m)

OUTSIDE

Rear Garden

Lower Ground Floor

Approx. 46.9 sq. metres (504.9 sq. feet)



Call Southsea - 023 9229 6396 ■ cubittandwest.co.uk

- Legal advice should be taken to verify fixtures/fittings, planning, alterations and/or lease details
- Appliances & services are untested, dimensions are approximate and floor plans are not to scale
- Through a Homewise Home For Life Plan people aged 60+ can secure this property for up to 59% less, by purchasing a Lifetime Lease.



42227040/20240305/HS/AML