



Price
£650,000

Freehold

6x  2x  2x 

**St. Andrew's Road,
Southsea, Hampshire,
PO5**

cubitt&west
Helping you move forwards

Accommodation

BASEMENT

Cellar: 12'5 x 9'9 (3.79m x 2.97m)

GROUND FLOOR

Entrance Hallway

Lounge: 19'2 x 14'1 (5.85m x 4.30m)

Dining Room: 14'11 x 12'5 (4.55m x 3.79m)

Kitchen/Breakfast Room: 27'11 x 11'3 (8.51m x 3.43m)

Conservatory: 11'8 x 6'8 (3.56m x 2.03m)

Bathroom

FIRST FLOOR

Landing

Bedroom 1: 19'0 x 12'6 (5.80m x 3.81m)

Bedroom 2: 14'11 x 12'6 (4.55m x 3.81m)

Shower Room

Bedroom 3: 11'3 x 11'2 (3.43m x 3.41m)

Bedroom 6: 9'3 x 6'0 (2.82m x 1.83m)

SECOND FLOOR

Landing

Bedroom 4: 15'0 x 12'7 (4.58m x 3.84m)

Bedroom 5: 16'1 x 12'6 (4.91m x 3.81m)

Kitchen

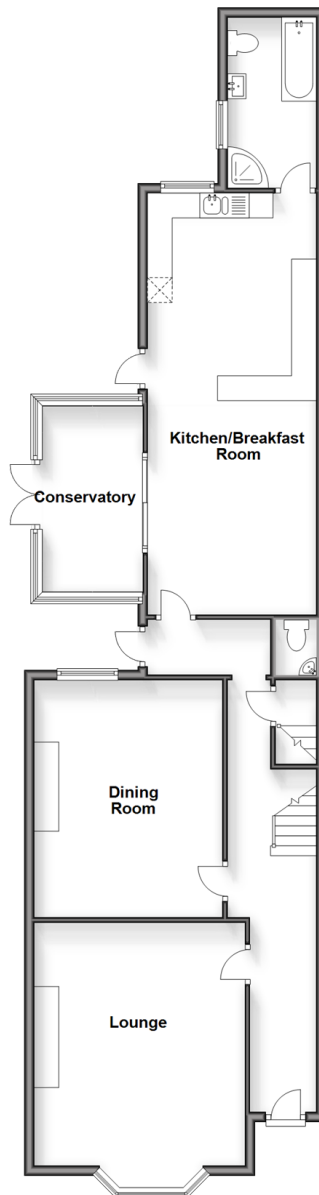
OUTSIDE

Off Road Parking

Rear Garden

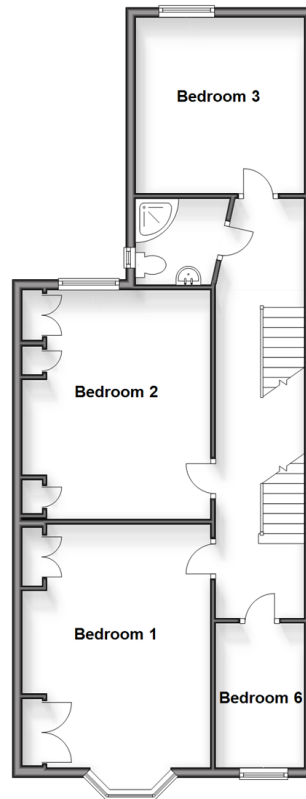
Ground Floor

Approx. 101.8 sq. metres (1096.1 sq. feet)



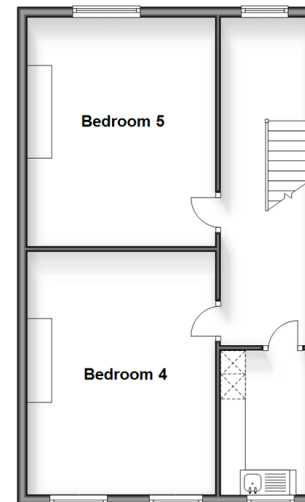
First Floor

Approx. 73.4 sq. metres (790.3 sq. feet)



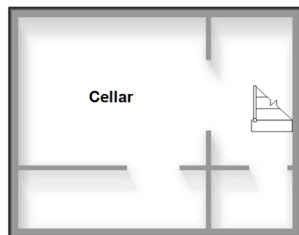
Second Floor

Approx. 54.6 sq. metres (587.6 sq. feet)



Basement

Approx. 23.5 sq. metres (252.4 sq. feet)





Main features

- A great sized residence in central Southsea
- Perfect family home or investment property
- Parking to front for 2 vehicles
- Sunny aspect rear garden
- Minutes from Elm Grove, Palmerston Road and Albert Road



Nearest Schools

Primary Schools: Cottage Grove Primary 0.1 miles, Somers Park Primary 0.3 miles, St Swithun's Catholic Primary 0.5 miles

Secondary Schools: St John's College 0.2 miles, St Luke's



Transport Information

Train Stations: Fratton 0.8 miles, Portsmouth & Southsea 1.6 miles, Portsmouth Harbour 2.0 miles



Address

St. Andrew's Road, Southsea, Hampshire, PO5



Directions

For directions to this property please contact us.



cubitt&west
Helping you move forwards

Call Southsea Branch 023 9229 6396 ■ cubittandwest.co.uk



■ Legal advice should be taken to verify fixtures/fittings, planning, alterations and/or lease details ■ Appliances & services are untested, dimensions are approximate and floor plans are not to scale



42227098/20240123/MO1/AML