



**OVER 60?**

Secure this property  
for up to **59% less!**

**Price**

**£340,000**

**Freehold**

3x  1x  1x 

**Edgeware Road,  
Southsea, Hampshire,  
PO4**

**cubitt&west**  
Helping you move forwards





## Main features

- A well presented family home in a popular location
- Off road parking, side access and landscaped low maintenance rear garden
- Open plan kitchen/dining area
- Separate family lounge with log burner

## Accommodation

### GROUND FLOOR

Entrance Hallway

Lounge: 13'4 x 11'8 (4.07m x 3.56m)

Kitchen/Dining Room: 20'2 x 10'8  
(6.15m x 3.25m)

### FIRST FLOOR

Landing

Bedroom 1: 13'4 x 12'6 (4.07m x 3.81m)

Bedroom 2: 11'7 x 9'5 (3.53m x 2.87m)

Bedroom 3: 9'7 x 7'2 (2.92m x 2.19m)

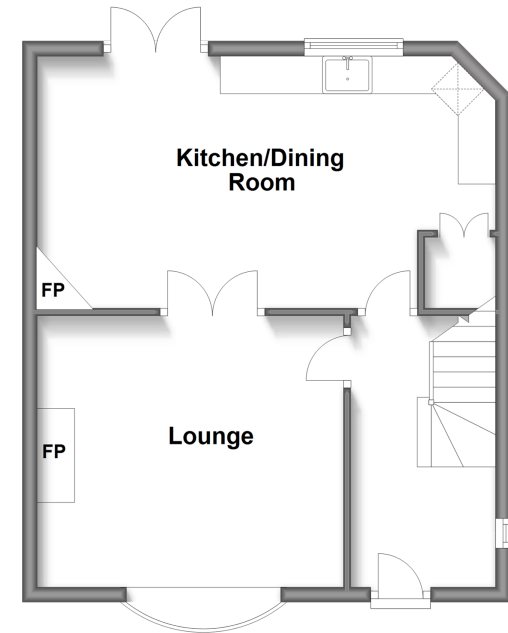
Bathroom

### OUTSIDE

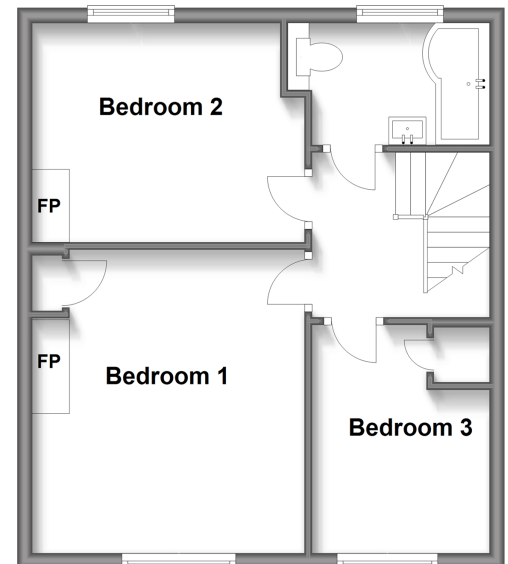
Off Road Parking

Rear Garden

## Ground Floor



## First Floor



**Call Southsea - 023 9229 6396 ■ [cubittandwest.co.uk](http://cubittandwest.co.uk)**

- Legal advice should be taken to verify fixtures/fittings, planning, alterations and/or lease details
- Appliances & services are untested, dimensions are approximate and floor plans are not to scale
- Through a Homewise Home For Life Plan people aged 60+ can secure this property for up to 59% less, by purchasing a Lifetime Lease.



42227115/20240207/MO1/AML