



Price
£340,000

Freehold

3x  1x  1x 

**Melrose Close,
Southsea, Hampshire,
PO4**

cubitt&west
Helping you move forwards



Main features

- Private rear garden
- Cul-de-sac location
- Open plan accommodation for modern living
- Wonderfully located between Milton and Bransbury park
- Lovely walks locally

Accommodation

GROUND FLOOR

Entrance Hallway

Lounge Area: 14'1 x 11'3 (4.30m x 3.43m)

Dining Area: 10'5 x 8'10 (3.18m x 2.69m)

Kitchen: 9'2 x 8'10 (2.80m x 2.69m)

FIRST FLOOR

Landing

Bedroom 1: 11'5 x 11'5 (3.48m x 3.48m)

Bedroom 2: 11'5 x 9'9 (3.48m x 2.97m)

Bedroom 3: 8'2 x 8'2 (2.49m x 2.49m)

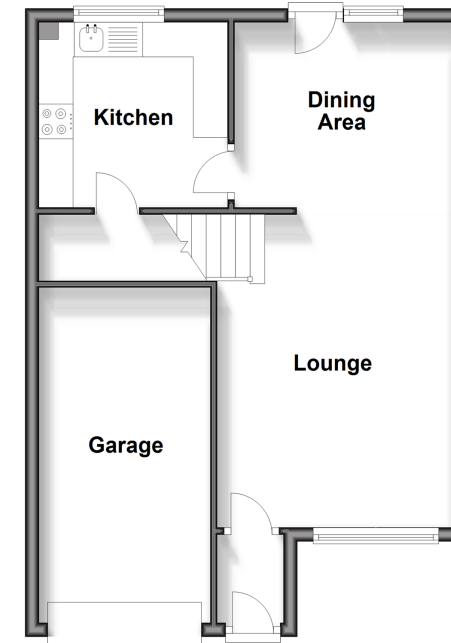
Bathroom

OUTSIDE

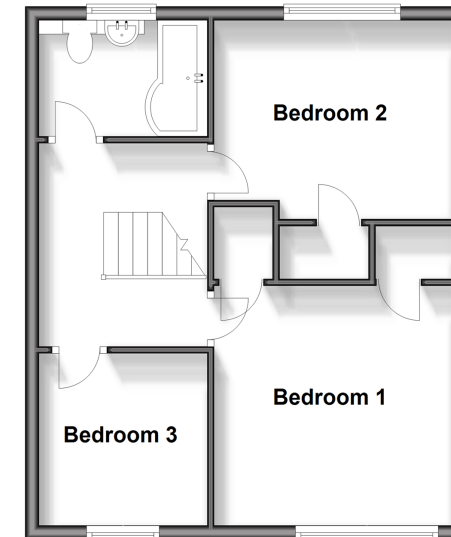
Garage & Off Road Parking

Rear Garden

Ground Floor
Approx. 48.9 sq. metres (525.8 sq. feet)



First Floor
Approx. 43.9 sq. metres (472.9 sq. feet)



Call Southsea - 023 9229 6396 ■ cubittandwest.co.uk

- Legal advice should be taken to verify fixtures/fittings, planning, alterations and/or lease details
- Appliances & services are untested, dimensions are approximate and floor plans are not to scale