



OVER 60?

Secure this property
for up to **59% less!**

Price

£600,000

Freehold

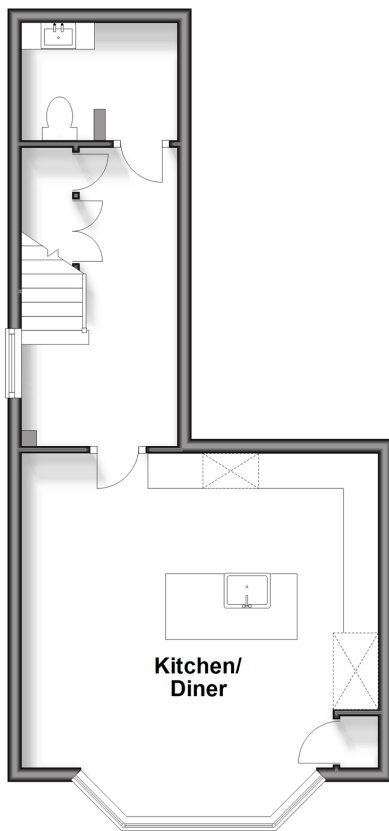
3x  3x  1x 

**Helena Road, Southsea,
Hampshire, PO4**

cubitt&west
Helping you move forwards

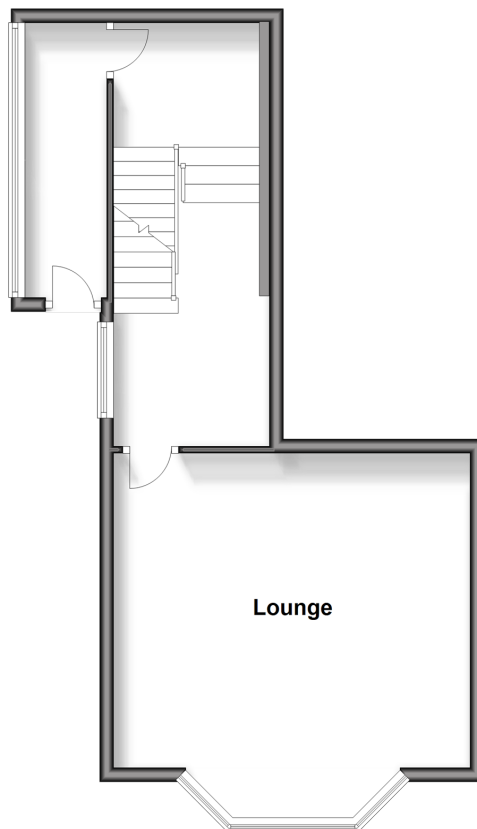
Lower Ground Floor

Approx. 37.6 sq. metres (404.3 sq. feet)



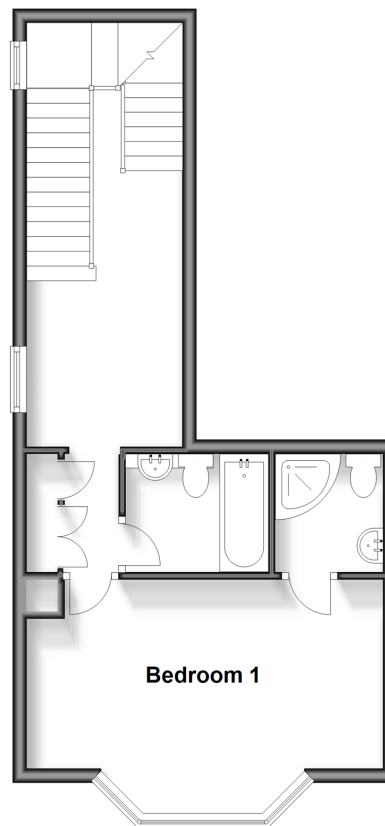
Ground Floor

Approx. 42.5 sq. metres (457.1 sq. feet)



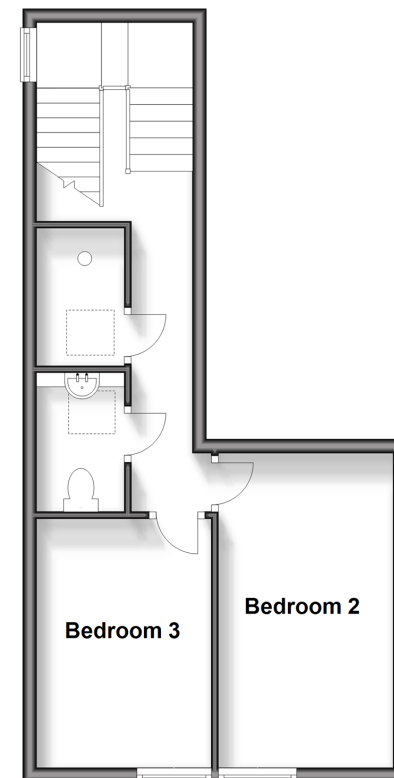
First Floor

Approx. 37.4 sq. metres (402.5 sq. feet)



Second Floor

Approx. 36.8 sq. metres (396.6 sq. feet)



Accommodation

LOWER GROUND FLOOR

Entrance Hallway

Kitchen/Diner: 17'2 x 16'8 (5.24m x 5.08m)

Utility Room/Toilet: 7'3 x 6'0 (2.21m x 1.83m)

GROUND FLOOR

Lounge: 18'3 x 16'9 (5.57m x 5.11m)

FIRST FLOOR

Landing

Bathroom

Bedroom 1: 16'9 x 12'3 (5.11m x 3.74m)

En-Suite Shower Room

SECOND FLOOR

Landing

Bedroom 2: 15'1 x 8'6 (4.60m x 2.59m)

Bedroom 3: 12'4 x 7'9 (3.76m x 2.36m)

Wet Room

OUTSIDE

Front Garden

Car Port & Off Road Parking



Main features

- A stunning residence in a desirable popular location
- Minutes from the seafront & Canoe lake
- Very well presented throughout with stunning features
- Car port & off road parking for several vehicles
- Tranquil sunny aspect garden to the front



Nearest Schools

Primary Schools: Craneswater Junior School 0.1 miles, St Swithun's Catholic Primary 0.4 miles.
Secondary Schools: Mayville High School 0.4 miles
Further Education: The Portsmouth Grammar School 1.4 miles



Transport Information

Train Stations: Fratton 0.9 miles, Portsmouth & Southsea 1.4 miles, Portsmouth Harbour 1.8 miles



Address

Helena Road, Southsea, Hampshire, PO4



Directions

For directions to this property please contact us.



cubitt&west
Helping you move forwards

Call Southsea Branch 023 9229 6396 ■ cubittandwest.co.uk



■ Legal advice should be taken to verify fixtures/fittings, planning, alterations and/or lease details ■ Appliances & services are untested, dimensions are approximate and floor plans are not to scale
■ Through a Homewise Home For Life Plan people aged 60+ can secure this property for up to 59% less, by purchasing a Lifetime Lease.



42227135/20240419/MO1/AML