



Price
£495,000

Freehold

4x  2x  1x 

**Ashby Place, Southsea,
Hampshire, PO5**

OVER 60?

Secure this property
for up to **59% less!**

cubitt & west
Helping you move forwards



Main features

- Immaculate family town house with new patio garden
- Newly refurbished kitchen and bathroom
- Excellent central location
- Integral garage & en-suite to bedroom one
- Minutes from Palmerston Road, Osbourne Road, the beach and seafront

Accommodation

GROUND FLOOR

Entrance Hallway
Cloakroom
Kitchen/Breakfast Room

FIRST FLOOR

Landing
Lounge: 17'3 x 9'8 (5.26m x 2.95m)
Bedroom 1: 15'4 x 8'1 (4.68m x 2.47m)
En-Suite Shower Room

SECOND FLOOR

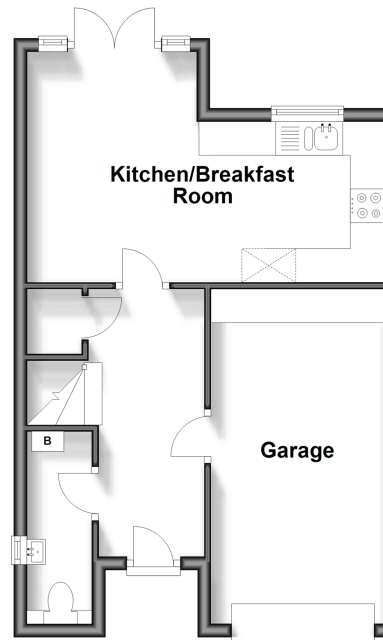
Landing
Bedroom 2: 17'5 x 8'3 (5.31m x 2.52m)
Bedroom 3: 10'0 x 8'2 (3.05m x 2.49m)
Bedroom 4: 9'7 x 8'9 (2.92m x 2.67m)
Bathroom

OUTSIDE

Integral Garage
Rear Garden

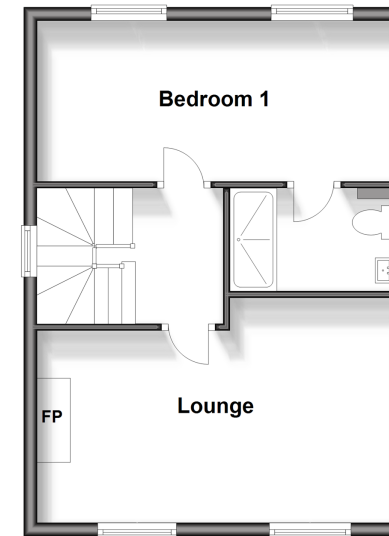
Ground Floor

Approx. 40.7 sq. metres (437.6 sq. feet)



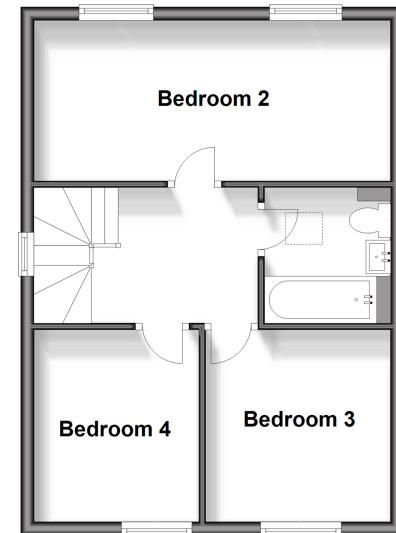
First Floor

Approx. 39.8 sq. metres (428.4 sq. feet)



Second Floor

Approx. 39.8 sq. metres (428.4 sq. feet)



Call Southsea - 023 9229 6396 ■ cubittandwest.co.uk

■ Legal advice should be taken to verify fixtures/fittings, planning, alterations and/or lease details
■ Through a Homewise Home For Life Plan people aged 60+ can secure this property for up to 59% less, by purchasing a Lifetime Lease.

■ Appliances & services are untested, dimensions are approximate and floor plans are not to scale