



Price
£260,000

Leasehold

2x  1x  1x 

**Jocelyn Court, Eastern
Parade, Southsea,
Hampshire, PO4**

OVER 60?

Secure this property
for up to **59% less!**

cubitt&west
Helping you move forwards



Main features

- Allocated parking space
- Lift access in the block and security system
- Offered with no forward chain
- Desirable location with a balcony and picturesque views
- Southsea seafront and canoe lake a short walk away

Accommodation

FIRST FLOOR

Entrance Hall

Lounge/Dining Room: 20'2 x 12'1 (6.15m x 3.69m)

Kitchen: 10'9 x 7'1 (3.28m x 2.16m)

Bedroom 1: 10'9 x 9'9 (3.28m x 2.97m)

Bedroom 2: 10'9 x 7'1 (3.28m x 2.16m)

Shower Room

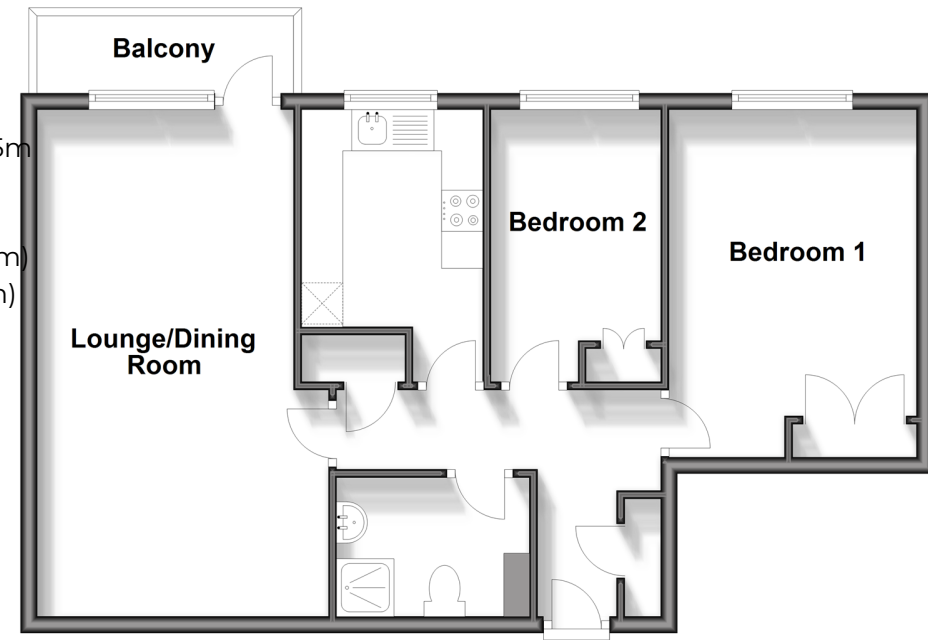
OUTSIDE

Communal Garden

Allocated Parking

First Floor

Approx. 59.7 sq. metres (642.5 sq. feet)



Call Southsea - 023 9229 6396 ■ cubittandwest.co.uk

- Legal advice should be taken to verify fixtures/fittings, planning, alterations and/or lease details
- Appliances & services are untested, dimensions are approximate and floor plans are not to scale
- Through a Homewise Home For Life Plan people aged 60+ can secure this property for up to 59% less, by purchasing a Lifetime Lease.



42227187/20240423/JT/SA