



OVER 60?

Secure this property
for up to **59% less!**

Price

£448,000

Freehold

4x  2x  1x 

**Herwick Lane,
Waterlooville,
Hampshire, PO7**

cubitt&west
Helping you move forwards



Main features

- Modern property throughout
- Spacious light and airy rooms
- En-suite shower room to main bedroom
- Secure private sunny aspect garden with a seating area and studio
- Price in excess of

Accommodation

GROUND FLOOR

Entrance Hall

Cloakroom

Lounge: 19'9 x 11'1 (6.02m x 3.38m)

Kitchen/Diner: 19'8 x 11'6 (6.00m x 3.51m)

Utility Room: 6'8 x 5'0 (2.03m x 1.53m)

FIRST FLOOR

Landing

Bedroom 1: 11'11 x 11'4 (3.63m x 3.46m)

En-Suite Shower Room

Bedroom 2: 19'8 x 9'2 (6.00m x 2.80m)

Bedroom 3: 9'8 x 8'11 (2.95m x 2.72m)

Bedroom 4: 9'10 x 8'0 (3.00m x 2.44m)

Bathroom

OUTSIDE

Rear Garden

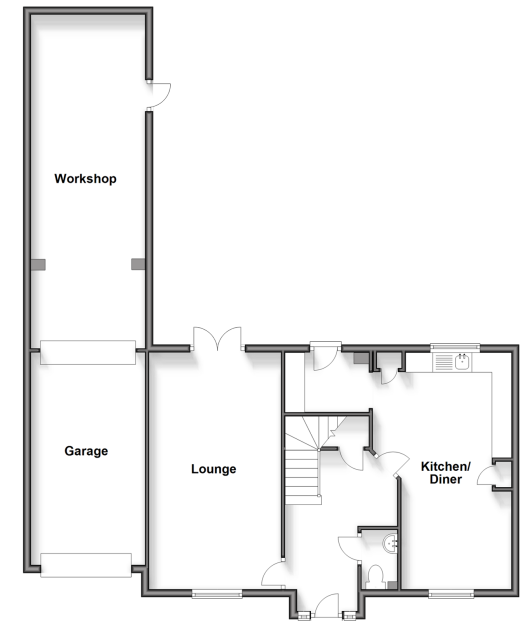
Garage

Studio: 14'5 x 10'6 (4.40m x 3.20m)

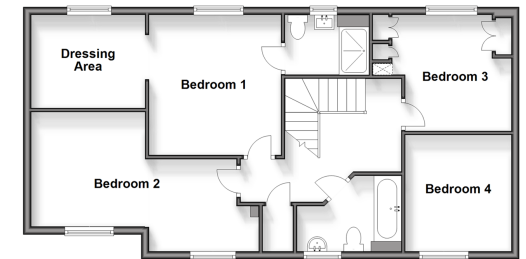
Call Waterloo - 02392 267244 ■ cubittandwest.co.uk

- Legal advice should be taken to verify fixtures/fittings, planning, alterations and/or lease details
- Appliances & services are untested, dimensions are approximate and floor plans are not to scale
- Through a Homewise Home For Life Plan people aged 60+ can secure this property for up to 59% less, by purchasing a Lifetime Lease.

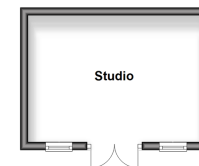
Ground Floor
Approx. 98.1 sq. metres (1055.9 sq. feet)



First Floor
Approx. 72.1 sq. metres (775.6 sq. feet)



Studio
Approx. 14.3 sq. metres (153.6 sq. feet)



42409642/20240216/JT/MO