



**Price**  
**£535,000**

**Freehold**

4x  2x  1x 

**Kidmere Way, Denmead,  
Waterlooville,  
Hampshire, PO7**

**OVER 60?**

Secure this property  
for up to **59% less!**



Video Tour available

**cubitt & west**  
Helping you move forwards





## Main features

- Flexible living accommodation with a downstairs cloakroom
- Open plan modern kitchen/diner
- One owner from new
- Quiet neighbourhood in a sought after location
- Solar panels
- Sunny aspect landscaped garden

## Accommodation

### GROUND FLOOR

Entrance Hall

Cloakroom

Kitchen/Dining Room: 22'9 x 11'6 (6.94m x 3.51m)

Lounge: 14'6 x 10'5 (4.42m x 3.18m)

Study: 9'8 x 7'9 (2.95m x 2.36m)

### FIRST FLOOR

Landing

Bedroom 1: 13'5 x 9'8 (4.09m x 2.95m)

En-Suite Shower Room

Bedroom 2: 11'6 x 9'0 (3.51m x 2.75m)

Bedroom 3: 11'0 x 9'2 (3.36m x 2.80m)

Bedroom 4: 9'8 x 9'2 (2.95m x 2.80m)

Bathroom

### OUTSIDE

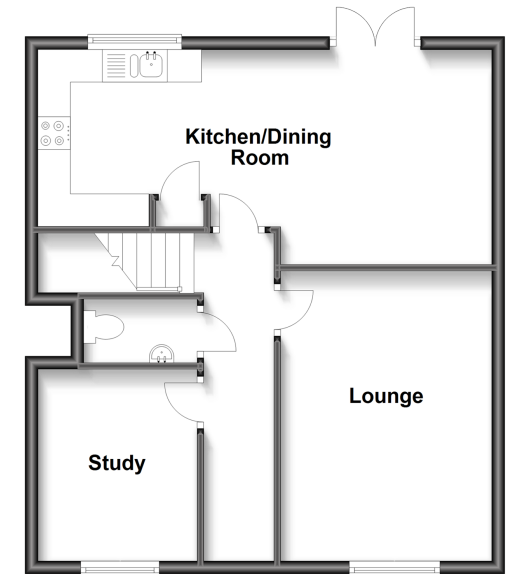
Rear Garden

Garage and Off Road Parking

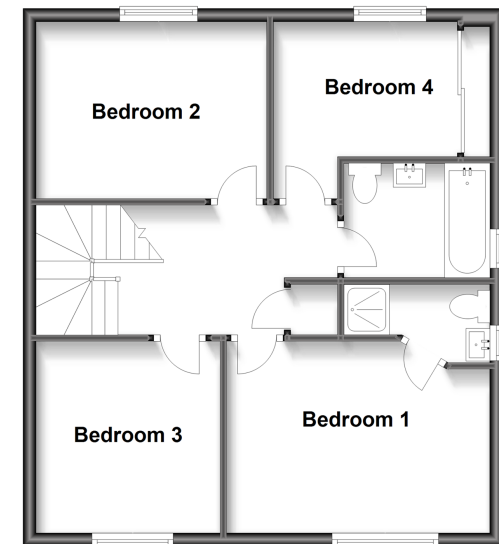
**Call Waterloo - 02392 267244 ■ [cubittandwest.co.uk](http://cubittandwest.co.uk)**

- Legal advice should be taken to verify fixtures/fittings, planning, alterations and/or lease details
- Appliances & services are untested, dimensions are approximate and floor plans are not to scale
- Through a Homewise Home For Life Plan people aged 60+ can secure this property for up to 59% less, by purchasing a Lifetime Lease.

**Ground Floor**  
Approx. 54.0 sq. metres (581.7 sq. feet)



**First Floor**  
Approx. 54.9 sq. metres (590.6 sq. feet)



42410135/20230126/EH/MO