



**Price**  
**£330,000**

**Freehold**

2x  1x  1x 

**Farrell Road,  
Waterlooville,  
Hampshire, PO8**

**OVER 60?**

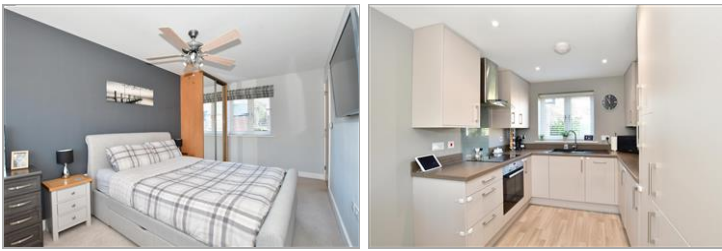
Secure this property  
for up to **59% less!**



Video Tour available

**cubitt&west**  
Helping you move forwards





## Main features

- Beautifully presented home in the popular area of Lovedean
- Modern kitchen/diner and a separate lounge
- Downstairs cloakroom and upstairs bathroom
- Landscaped sunny aspect garden
- Fully owned solar panels

## Accommodation

### GROUND FLOOR

Entrance Hall

Cloakroom

Kitchen/Diner: 16'7 x 8'8 (5.06m x 2.64m)

Lounge: 12'9 x 9'7 (3.89m x 2.92m)

### FIRST FLOOR

Landing

Bedroom 1: 16'5 x 9'0 (5.01m x 2.75m)

Bedroom 2: 12'9 x 10'0 (3.89m x 3.05m)

Bathroom

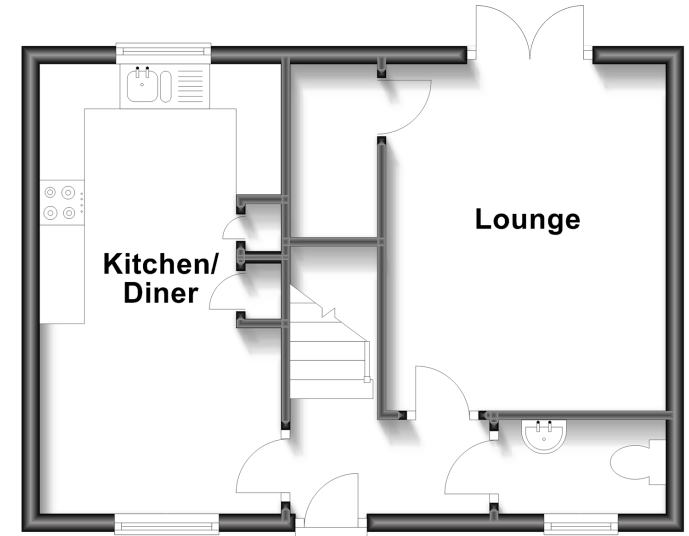
### OUTSIDE

Front and Rear Gardens

Off Road Parking

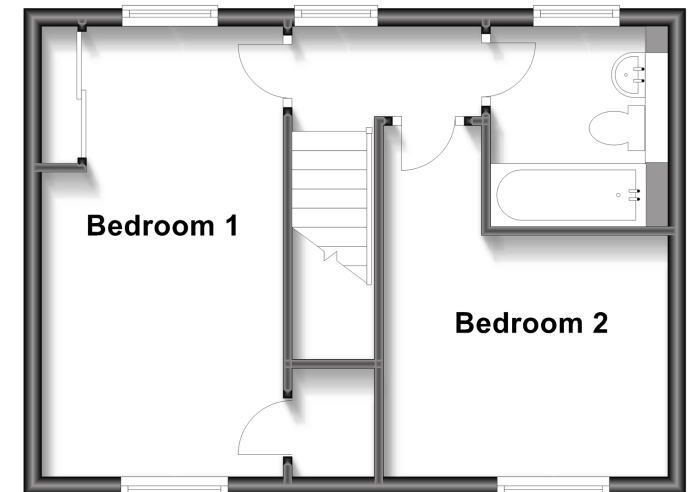
## Ground Floor

Approx. 35.0 sq. metres (376.4 sq. feet)



## First Floor

Approx. 35.0 sq. metres (376.4 sq. feet)



**Call Waterloo - 02392 267244 ■ [cubittandwest.co.uk](http://cubittandwest.co.uk)**

- Legal advice should be taken to verify fixtures/fittings, planning, alterations and/or lease details
- Appliances & services are untested, dimensions are approximate and floor plans are not to scale
- Through a Homewise Home For Life Plan people aged 60+ can secure this property for up to 59% less, by purchasing a Lifetime Lease.



42410156/20230120/EH/MO