



Price

£399,995

Freehold

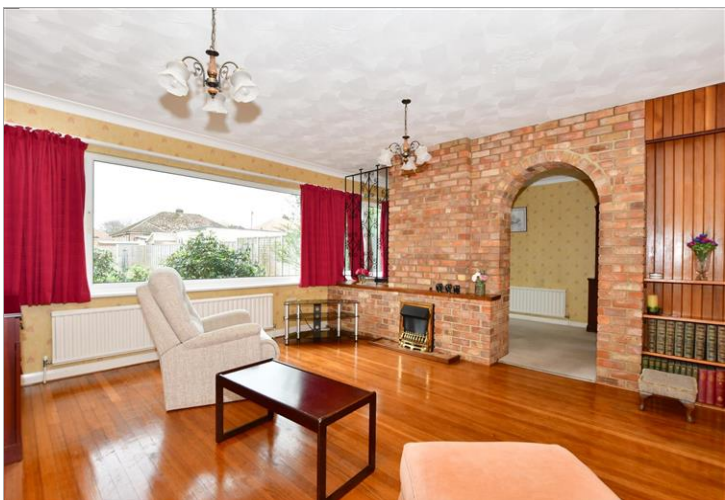
3x  1x  2x 

**Kings Road, Cowplain,
Waterlooville,
Hampshire, PO8**

OVER 60?

Secure this property
for up to **59% less!**

cubitt & west
Helping you move forwards



Main features

- Offered with no forward chain
- All rooms upstairs are doubles
- Downstairs cloakroom and upstairs bathroom
- Spacious sunny aspect garden perfect for families or keen gardeners
- Close to all shops and bus links and within walking distance to schools

Accommodation

GROUND FLOOR

Entrance Hall

Cloakroom

Kitchen: 12'5 x 10'8 (3.79m x 3.25m)

Lounge: 15'2 x 14'1 (4.63m x 4.30m)

Dining Area: 12'2 x 7'9 (3.71m x 2.36m)

FIRST FLOOR

Landing

Bedroom 1: 13'7 x 12'5 (4.14m x 3.79m)

Bedroom 2: 12'3 x 12'0 (3.74m x 3.66m)

Bedroom 3: 10'8 x 10'0 (3.25m x 3.05m)

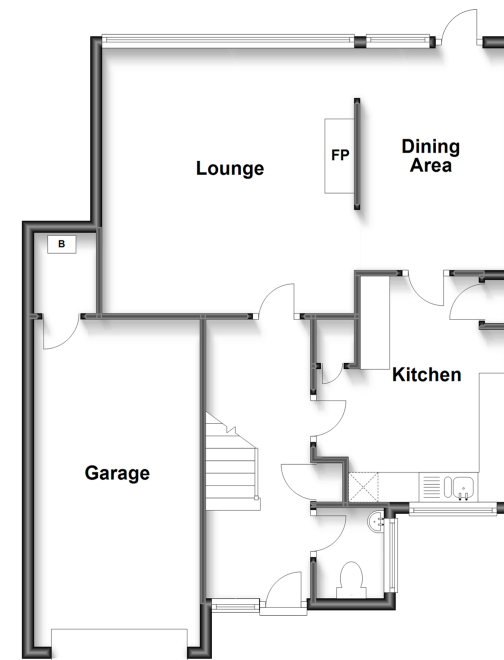
Bathroom

OUTSIDE

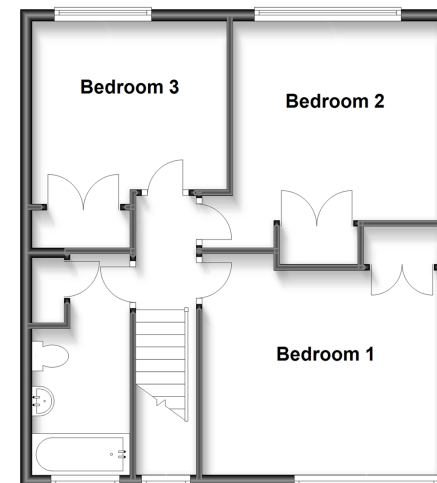
Front and Rear Gardens

Garage and Off Road Parking

Ground Floor
Approx. 70.0 sq. metres (753.3 sq. feet)



First Floor
Approx. 52.8 sq. metres (568.2 sq. feet)



Call Waterloo - 02392 267244 ■ cubittandwest.co.uk

- Legal advice should be taken to verify fixtures/fittings, planning, alterations and/or lease details
- Appliances & services are untested, dimensions are approximate and floor plans are not to scale
- Through a Homewise Home For Life Plan people aged 60+ can secure this property for up to 59% less, by purchasing a Lifetime Lease.