



**Guide Price**  
**£425,000**

**Freehold**

4x  1x  2x 

**Pakenham Road,  
Waterlooville,  
Hampshire, PO7**

**OVER 60?**

Secure this property  
for up to **59% less!**

**cubitt & west**  
Helping you move forwards





## Main features

- Downstairs cloakroom and upstairs modern bathroom
- En-suite to main bedroom
- Open plan kitchen diner with doors leading on to a private sunny aspect garden
- Sought after location
- Good sized garden

## Accommodation

### GROUND FLOOR

Entrance Hall

Lounge: 15'9 x 10'7 (4.80m x 3.23m)

Kitchen/Diner: 18'0 x 13'0 (5.49m x 3.97m)

Cloakroom

### FIRST FLOOR

Landing

Bedroom 1: 11'7 x 9'0 (3.53m x 2.75m)

En-Suite Shower Room

Bedroom 2: 9'7 x 9'0 (2.92m x 2.75m)

Family Bathroom

Bedroom 4: 8'5 x 5'0 (2.57m x 1.53m)

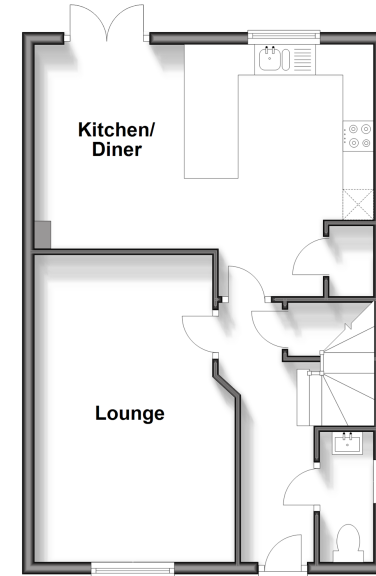
Bedroom 3: 8'9 x 7'3 (2.67m x 2.21m)

### OUTSIDE

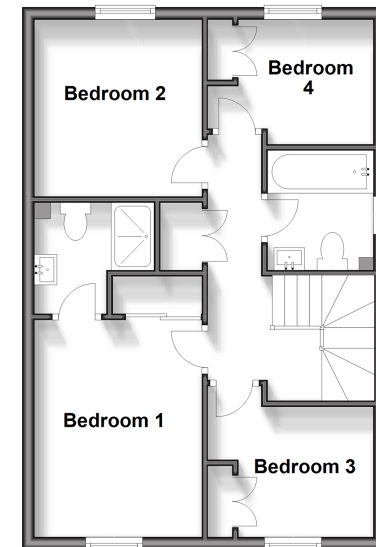
Front & Rear Gardens

Garage & Off-Road Parking

**Ground Floor**  
Approx. 47.1 sq. metres (506.9 sq. feet)



**First Floor**  
Approx. 47.1 sq. metres (506.9 sq. feet)



**Call Waterlooille - 02392 267244 ■ cubittandwest.co.uk**

- Legal advice should be taken to verify fixtures/fittings, planning, alterations and/or lease details
- Appliances & services are untested, dimensions are approximate and floor plans are not to scale
- Through a Homewise Home For Life Plan people aged 60+ can secure this property for up to 59% less, by purchasing a Lifetime Lease.



42410214/20240221/JT/MO