



**Price**  
**£300,000**

**Freehold**

3x  2x  1x 

**Flag Walk,  
Waterlooville,  
Hampshire, PO8**

**OVER 60?**

Secure this property  
for up to **59% less!**

**cubitt & west**  
Helping you move forwards





## Main features

- Modern open plan kitchen/diner with fitted appliances
- Loft room with en-suite shower room
- Generous sunny aspect garden with a shed for storage
- Great access to local shops and bus stops
- Sought after location

## Accommodation

### GROUND FLOOR

Entrance Hall

Lounge: 13'6 x 11'9 (4.12m x 3.58m)

Kitchen/Diner: 20'4 x 10'8 (6.20m x 3.25m)

### FIRST FLOOR

Landing

Bedroom 1: 13'2 x 10'9 (4.02m x 3.28m)

Bedroom 2: 13'4 x 10'2 (4.07m x 3.10m)

Bedroom 3: 9'1 x 7'3 (2.77m x 2.21m)

Bathroom

Separate Toilet

### SECOND FLOOR

Loft Room: 20'3 x 15'5 (6.18m x 4.70m)

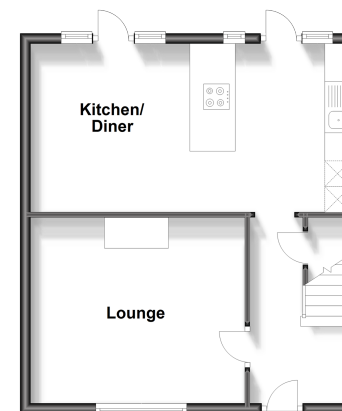
En-Suite Shower Room

### OUTSIDE

Front and Rear Gardens

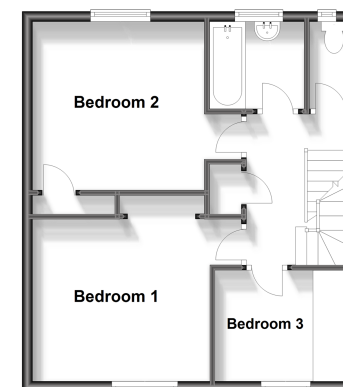
### Ground Floor

Approx. 43.8 sq. metres (471.5 sq. feet)



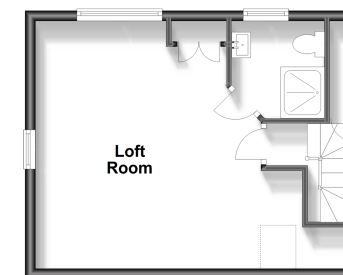
### First Floor

Approx. 43.8 sq. metres (471.5 sq. feet)



### Second Floor

Approx. 30.2 sq. metres (324.9 sq. feet)



**Call Waterlooille - 02392 267244 ■ cubittandwest.co.uk**

- Legal advice should be taken to verify fixtures/fittings, planning, alterations and/or lease details
- Appliances & services are untested, dimensions are approximate and floor plans are not to scale
- Through a Homewise Home For Life Plan people aged 60+ can secure this property for up to 59% less, by purchasing a Lifetime Lease.



42410238/20230930/EH/MO