



Price
£300,000

Freehold

3x  1x  1x 

**Kennedy Close,
Waterlooville,
Hampshire, PO7**

OVER 60?

Secure this property
for up to **59% less!**

cubitt&west
Helping you move forwards



Main features

- Immaculate property throughout
- Open plan lounge/diner
- Double bedrooms with upstairs bathroom
- Sunny aspect private rear garden
- Great catchment for schools and close to local amenities

Accommodation

GROUND FLOOR

Porch

Entrance Hall

Kitchen: 11'2 x 8'0 (3.41m x 2.44m)

Lounge/Diner: 22'0 x 13'0 (6.71m x 3.97m)

FIRST FLOOR

Landing

Bedroom 1: 12'0 x 10'0 (3.66m x 3.05m)

Bedroom 2: 13'0 x 9'0 (3.97m x 2.75m)

Bedroom 3: 9'0 x 7'0 (2.75m x 2.14m)

Bathroom

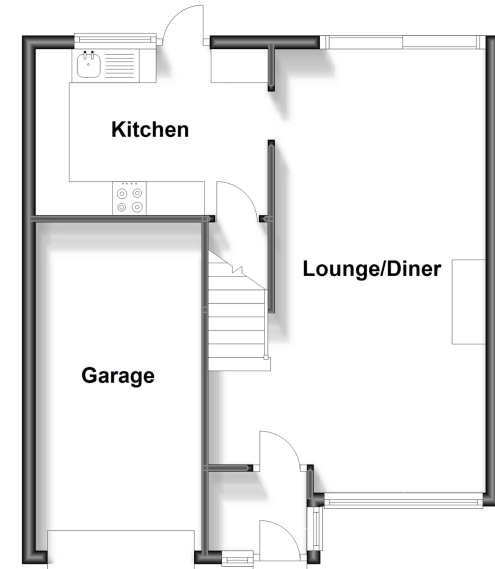
Separate Toilet

OUTSIDE

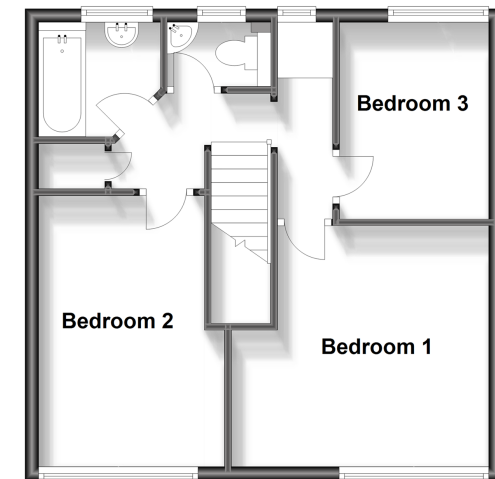
Rear Garden

Garage and Off Road Parking

Ground Floor
Approx. 54.0 sq. metres (580.9 sq. feet)



First Floor
Approx. 44.0 sq. metres (473.6 sq. feet)



Call Waterloo - 02392 267244 ■ cubittandwest.co.uk

- Legal advice should be taken to verify fixtures/fittings, planning, alterations and/or lease details
- Appliances & services are untested, dimensions are approximate and floor plans are not to scale
- Through a Homewise Home For Life Plan people aged 60+ can secure this property for up to 59% less, by purchasing a Lifetime Lease.



42410350/20231005/MO/MO