



**OVER 60?**

Secure this property  
for up to **59% less!**

**Price**  
**£315,000**

**Freehold**

2x  1x  1x 

**London Road,  
Horndean,  
Waterlooville,  
Hampshire, PO8**

**cubitt&west**  
Helping you move forwards





## Main features

- No forward chain
- Fully modernised kitchen and bathroom decor
- Large sunny aspect front and rear garden
- Popular Cowplain location close to shops, schools and bus links
- Spacious rooms with high ceilings

## Accommodation

### GROUND FLOOR

Entrance Hall

Lounge: 23'0 x 15'0 (7.02m x 4.58m)

Kitchen: 14'0 x 13'0 (4.27m x 3.97m)

### FIRST FLOOR

Landing

Bedroom 1: 15'0 x 9'0 (4.58m x 2.75m)

Bedroom 2: 11'0 x 9'1 (3.36m x 2.77m)

Bathroom

### OUTSIDE

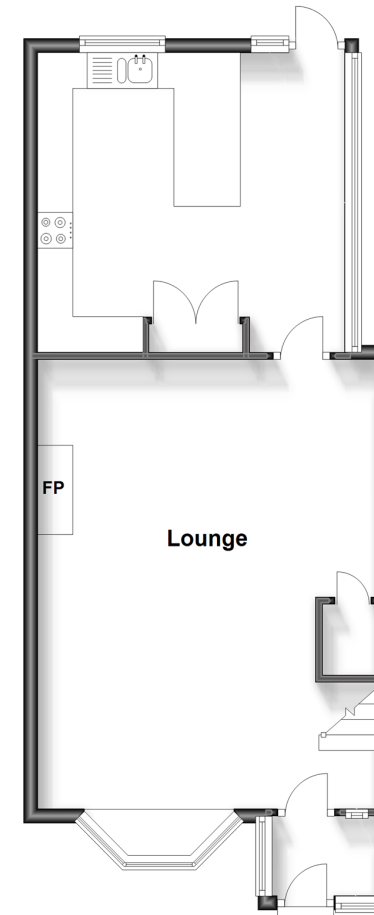
Front Garden

Rear Garden

Resident Parking Permit

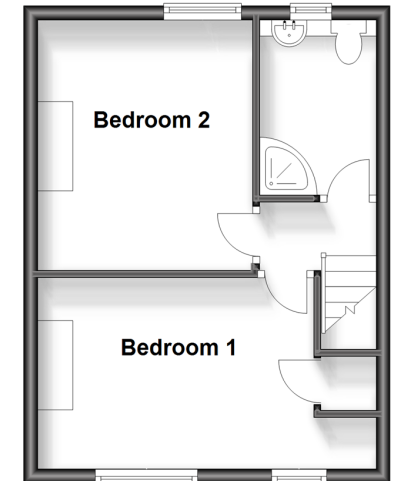
### Ground Floor

Approx. 51.1 sq. metres (550.0 sq. feet)



### First Floor

Approx. 30.3 sq. metres (325.8 sq. feet)



**Call Waterlooille - 02392 267244 ■ [cubittandwest.co.uk](http://cubittandwest.co.uk)**

- Legal advice should be taken to verify fixtures/fittings, planning, alterations and/or lease details
- Appliances & services are untested, dimensions are approximate and floor plans are not to scale
- Through a Homewise Home For Life Plan people aged 60+ can secure this property for up to 59% less, by purchasing a Lifetime Lease.



42410495/20240501/NJ21/MO