



**Price**

**£150,000**

**Leasehold**

2x  1x  1x 

**Mengham Court,  
Goldring Close, Hayling  
Island, Hampshire, PO11**



**Video Tour available**

**cubitt&west**  
Helping you move forwards





## Main features

- First floor flat with access via stairlift
- Over 55's retirement property
- Quiet residential area within short walk of Mengham shops
- Good bus links nearby
- Located down a popular cul-de-sac

## Accommodation

### FIRST FLOOR

#### Hallway

**Lounge** : 18'5 x 14'2 (5.62m x 4.32m)

**Kitchen** : 8'3 x 7'10 (2.52m x 2.39m)

**Bedroom 1**: 13'2 x 9'2 (4.02m x 2.80m)

**Bedroom 2**: 8'6 x 8'5 (2.59m x 2.57m)

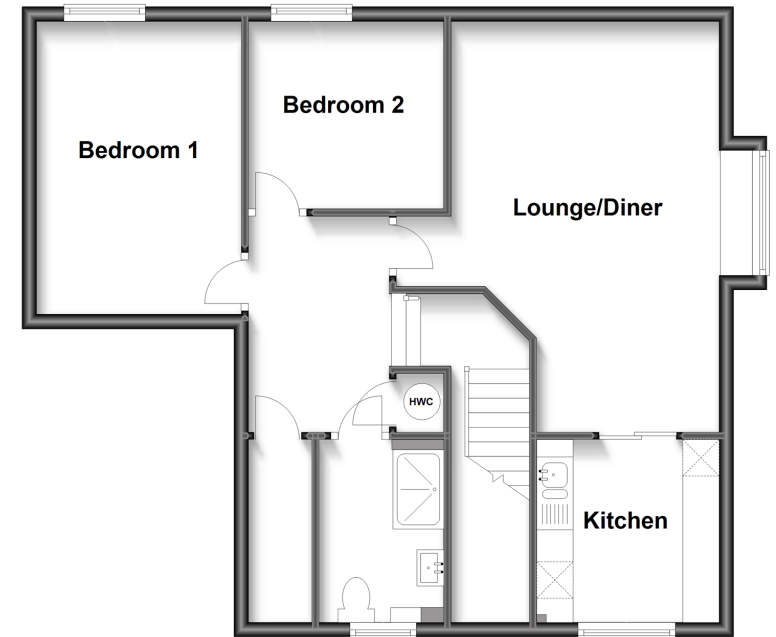
#### Shower Room

### OUTSIDE

#### Communal Gardens

### First Floor

Approx. 65.6 sq. metres (706.5 sq. feet)



**Call Emsworth - 01243 377888 ■ [cubittandwest.co.uk](http://cubittandwest.co.uk)**

- Legal advice should be taken to verify fixtures/fittings, planning, alterations and/or lease details
- Appliances & services are untested, dimensions are approximate and floor plans are not to scale



44607084/20220718/DU/DU