



Price

£600,000

Freehold

3x  1x  2x 

**Havant Road, Hayling
Island, Hampshire, PO11**

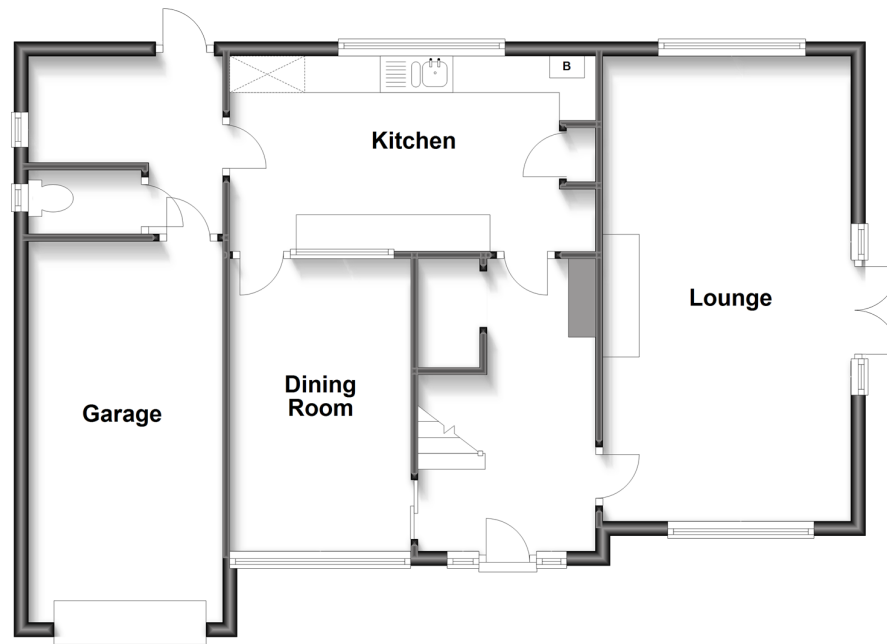
OVER 60?

Secure this property
for up to **59% less!**

cubitt&west
Helping you move forwards

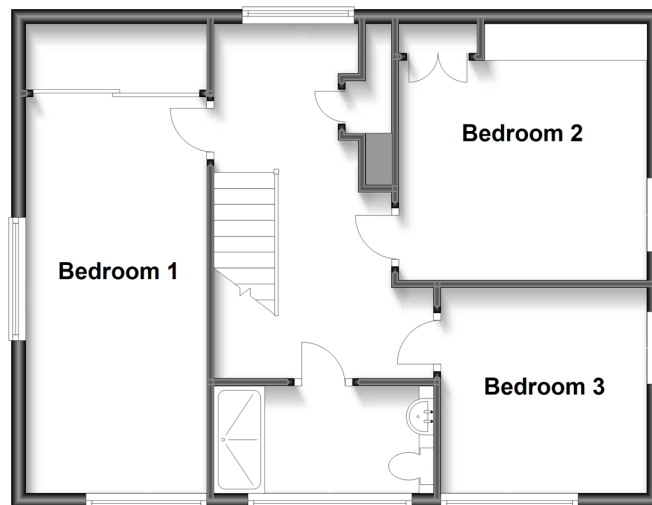
Ground Floor

Approx. 78.0 sq. metres (839.6 sq. feet)



First Floor

Approx. 55.0 sq. metres (592.0 sq. feet)



Accommodation

GROUND FLOOR

Entrance Hallway

Lounge: 20'10 x 11'1 (6.35m x 3.38m)

Dining Room: 13'0 x 8'2 (3.97m x 2.49m)

Kitchen : 16'6 x 8'9 (5.03m x 2.67m)

Cloakroom

FIRST FLOOR

Landing

Bedroom 1: 17'11 x 8'2 (5.46m x 2.49m)

Bedroom 2: 11'4 x 11'2 (3.46m x 3.41m)

Bedroom 3: 9'5 x 9'0 (2.87m x 2.75m)

Bathroom

OUTSIDE

Front And Rear Gardens

Off Road Parking & Garage



Main features

- Detached family home in fantastic location in cul de sac, set back from road
- Brilliant sized garden so ideal for family living
- Fantastic size bedrooms upstairs
- Views over paddocks at the rear of property
- Potential to update and extend, subject to relevant planning



Nearest Schools

Primary Schools: Mill Rythe Junior School 1.5 miles, Mengham Junior School 2.2 miles.

Secondary Schools: The Hayling College 1.9 miles.



Transport Information

Train Stations: Havant 2.7 miles.



Address

Havant Road, Hayling Island, Hampshire, PO11



Directions

For directions to this property please contact us.



cubitt&west
Helping you move forwards

Call Emsworth Branch 01243 377888 ■ cubittandwest.co.uk



■ Legal advice should be taken to verify fixtures/fittings, planning, alterations and/or lease details ■ Appliances & services are untested, dimensions are approximate and floor plans are not to scale
■ Through a Homewise Home For Life Plan people aged 60+ can secure this property for up to 59% less, by purchasing a Lifetime Lease.



44607556/20230321/DU/DU