



OVER 60?

Secure this property
for up to **59% less!**

Price

£220,000

Leasehold

1x  1x  1x 

**Bulbeck Court,
Guildford Close,
Southbourne, West
Sussex, PO10**

cubitt&west
Helping you move forwards



Main features

- Ground floor apartment with 105 years lease
- Private entrance
- Allocated parking under a car port
- Landscaped communal gardens
- Close proximity to all the local amenities and transport links, including the train station

Accommodation

GROUND FLOOR

Entrance Hall

Lounge: 17'0 x 12'11 (5.19m x 3.94m)

Kitchen : 8'11 x 7'2 (2.72m x 2.19m)

Bedroom: 10'5 x 10'1 (3.18m x 3.08m)

Bathroom : 6'11 x 6'5 (2.11m x 1.96m)

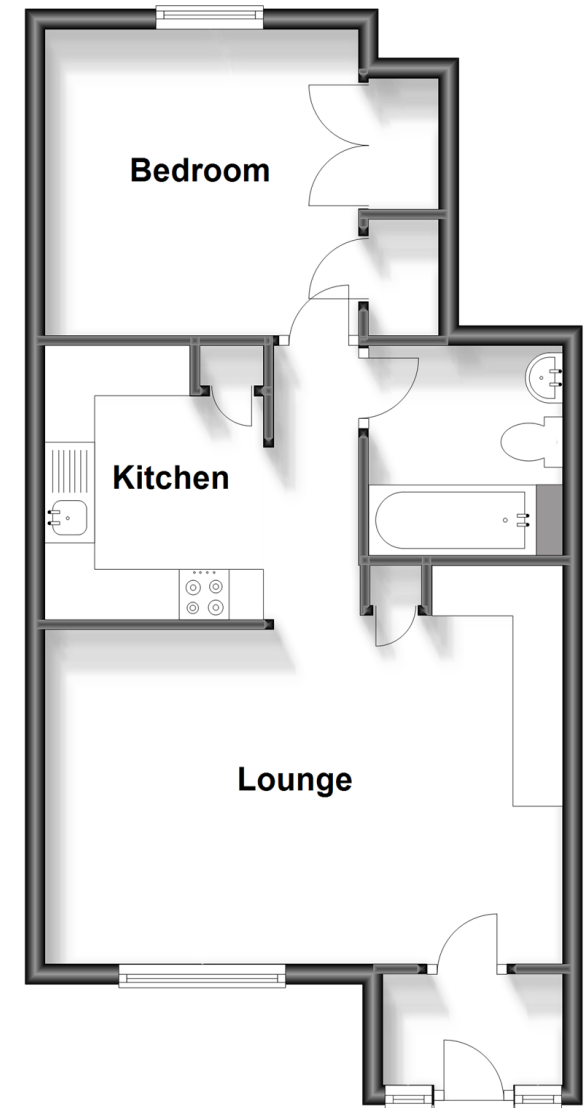
OUTSIDE

Parking Space

Communal Garden

Ground Floor

Approx. 46.1 sq. metres (496.2 sq. feet)



Call Emsworth - 01243 377888 ■ cubittandwest.co.uk

- Legal advice should be taken to verify fixtures/fittings, planning, alterations and/or lease details
- Appliances & services are untested, dimensions are approximate and floor plans are not to scale
- Through a Homewise Home For Life Plan people aged 60+ can secure this property for up to 59% less, by purchasing a Lifetime Lease.

